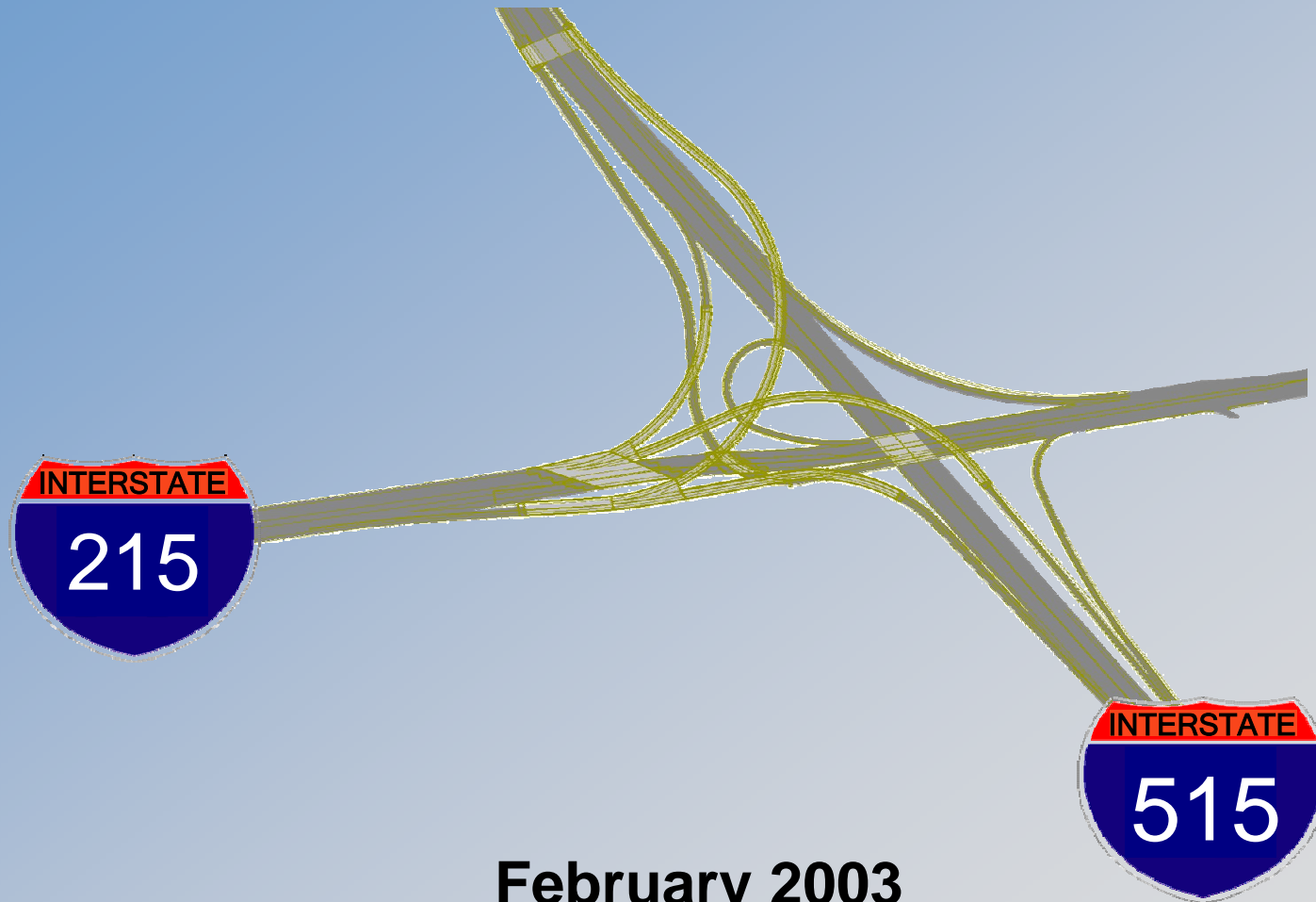


I-215/I-515 Interchange

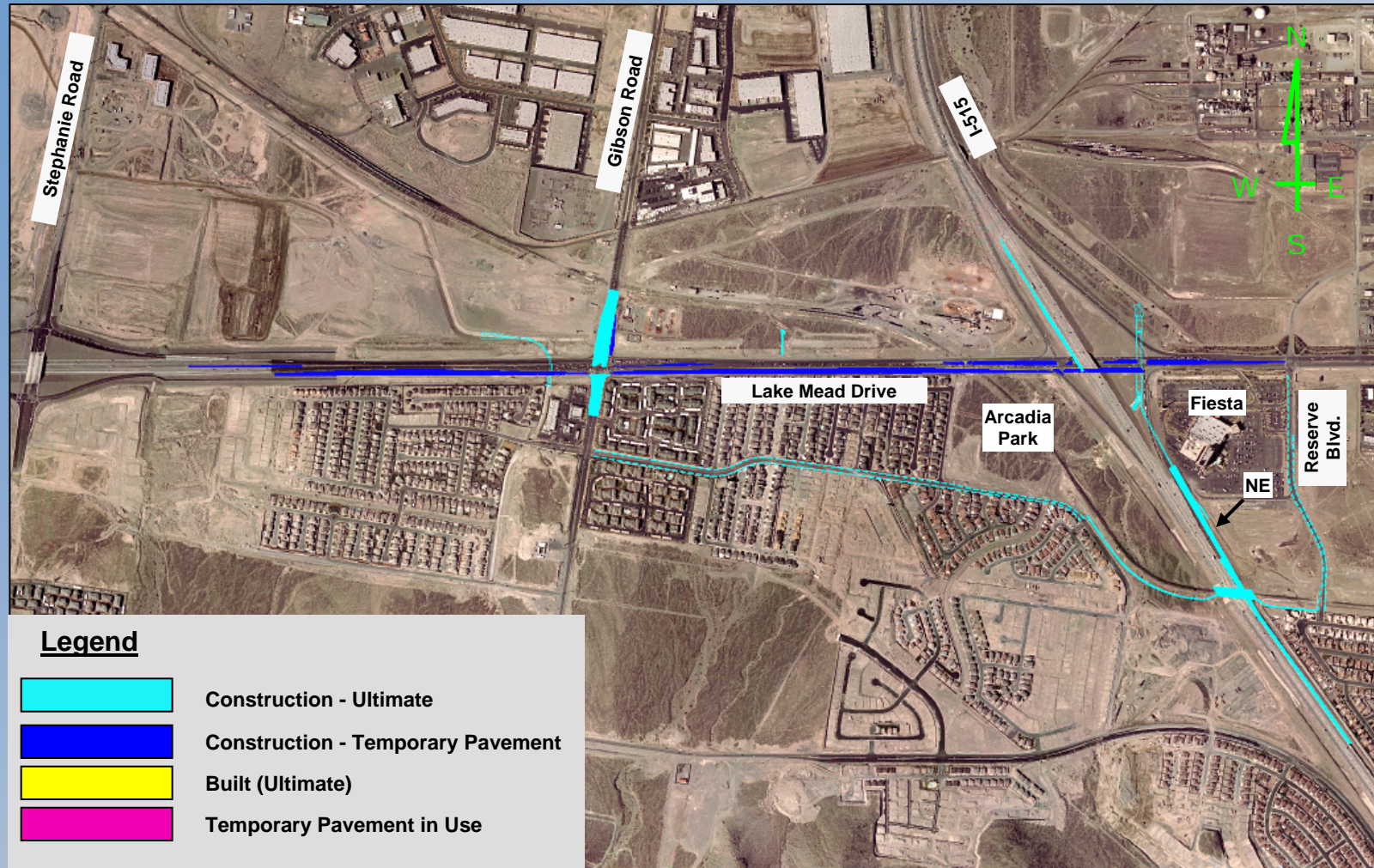


February 2003

Lake Mead Drive/I-515 Pre-Construction



Stage 1 Construction



Stage 1 Construction

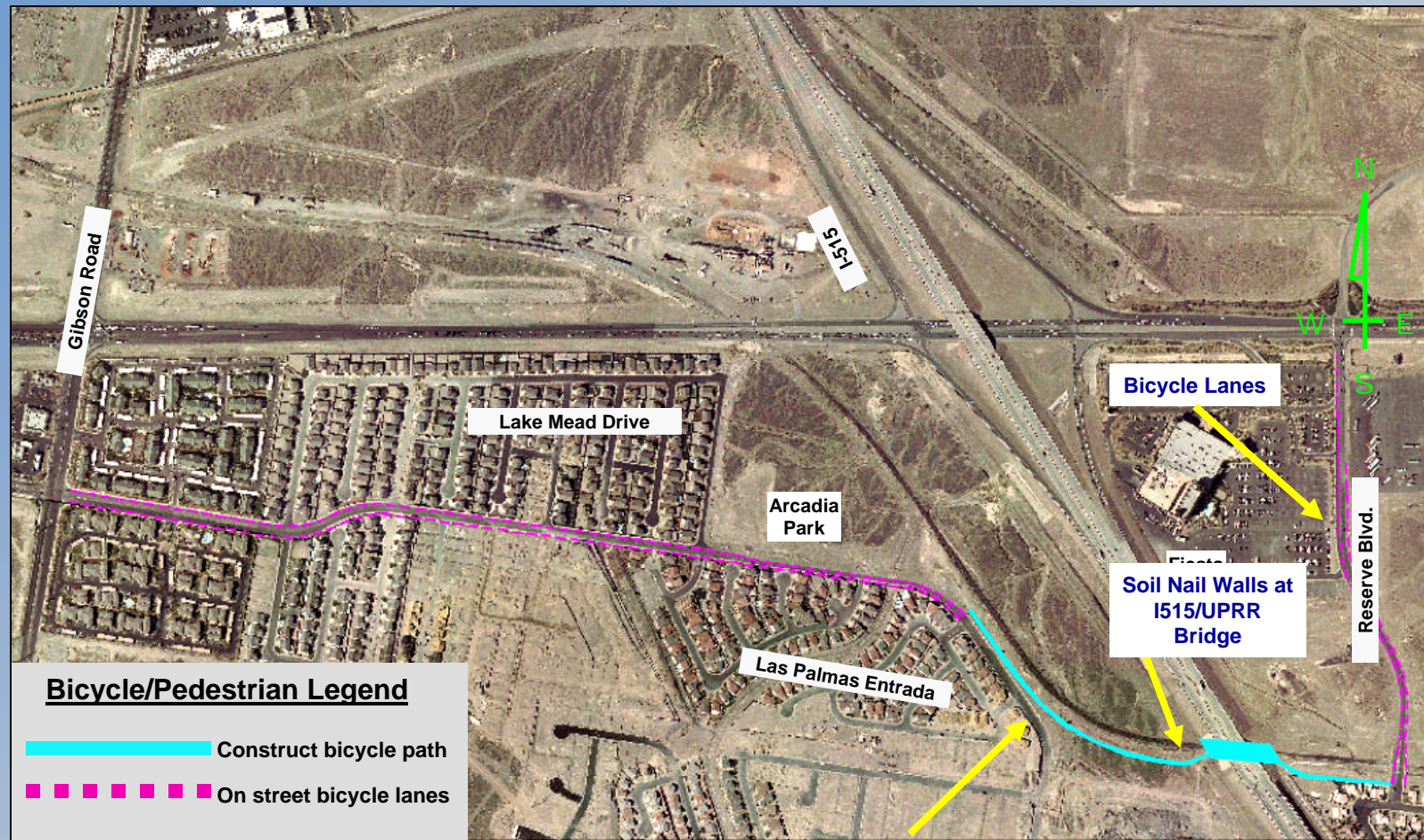
- Construct bicycle and pedestrian detour
- Construct GS1-GS4 Ramp Detour
- Construct PTIS, GS-W, and Pittman Railroad Channel
- Construct temporary pavement for Lake Mead Drive
- Reconstruct Gibson Road
- Begin construction of I-515 “NE” ramp

Bicycle/Pedestrian Detour

■ Construct Soil Nail Walls at the I-515/UPRR Bridge

■ Construct Bicycle Path

■ Add Bicycle Lanes to Reserve Boulevard





Pedestrian Bike Path

QWE



Widening Reserve Blvd.



Soil Nail Wall



QWE

GS1-GS4 Detour





GSW Box Culvert



PTIS Box Culvert



Reconstruct Gibson Road

QWE



Stage 2 Detour

Stage 2 Construction

- Start construction of “SW”, “SE”, “WN”, and “WS” ramps off-line
- Continue construction of “NE” ramp
- Construct Tie-Back Wall
- Start construction of “EN” ramp
- Construct “NW” ramp complete
- Construct I-215/Lake Mead Drive



Columns for SW, EN, & NW Ramp



Wall 108

QWE



QWE

G-1465 Structures





QWE

EN Ramp Steel Erection



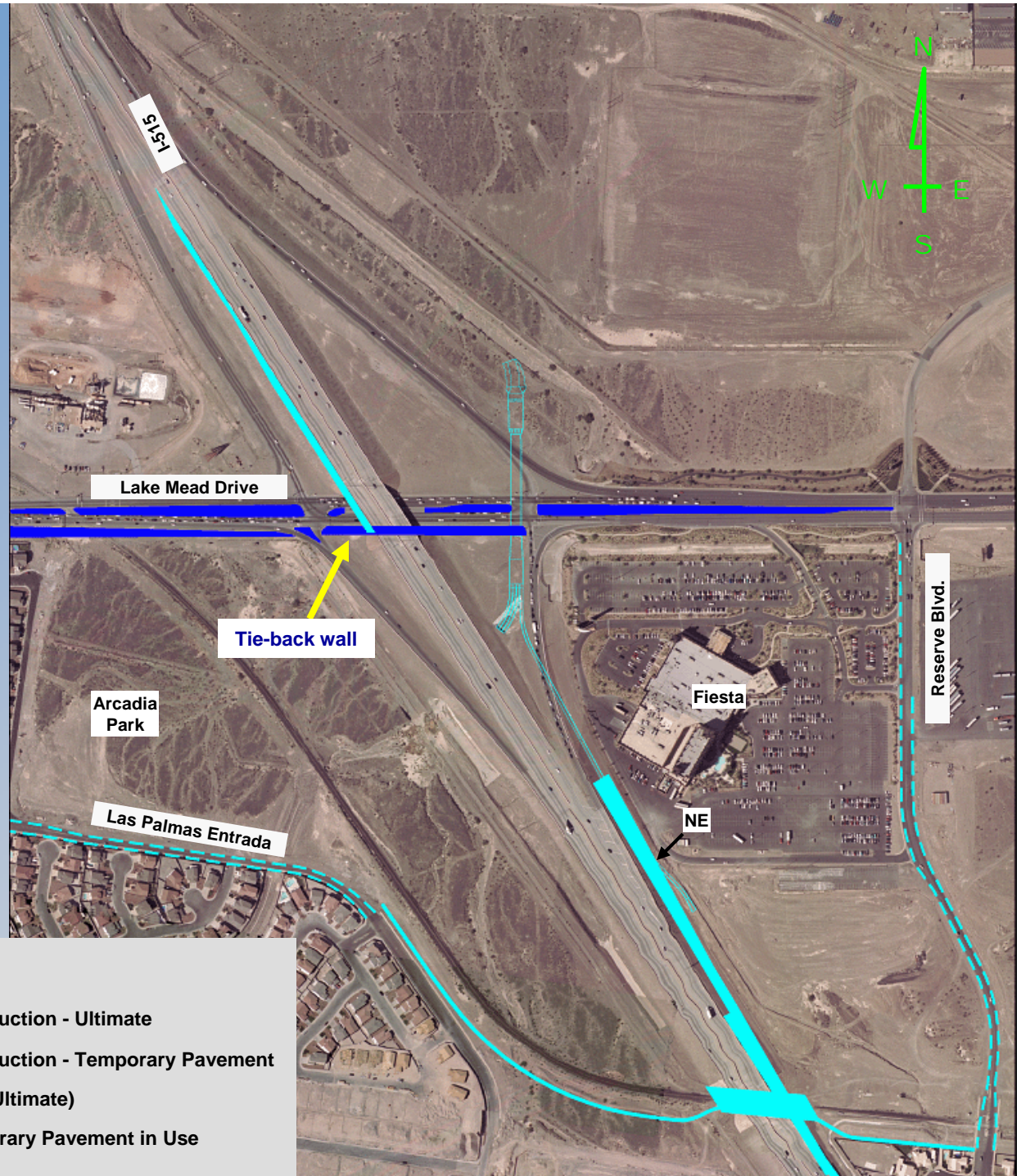
QWE

PCCP on I-215 Mainline



Stage 2 I-515 Interchange Construction

- Construct tie-back wall along Lake Mead Drive at the I-515 bridge



Legend

	Construction - Ultimate
	Construction - Temporary Pavement
	Built (Ultimate)
	Temporary Pavement in Use

QWE





QWE

Tie-Back Wall



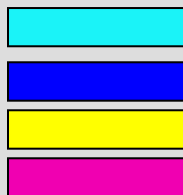
Stage 2 I-515 Interchange Construction

- Construct tie-back wall along Lake Mead Drive at the I-515 bridge
- Widen I-515 bridge

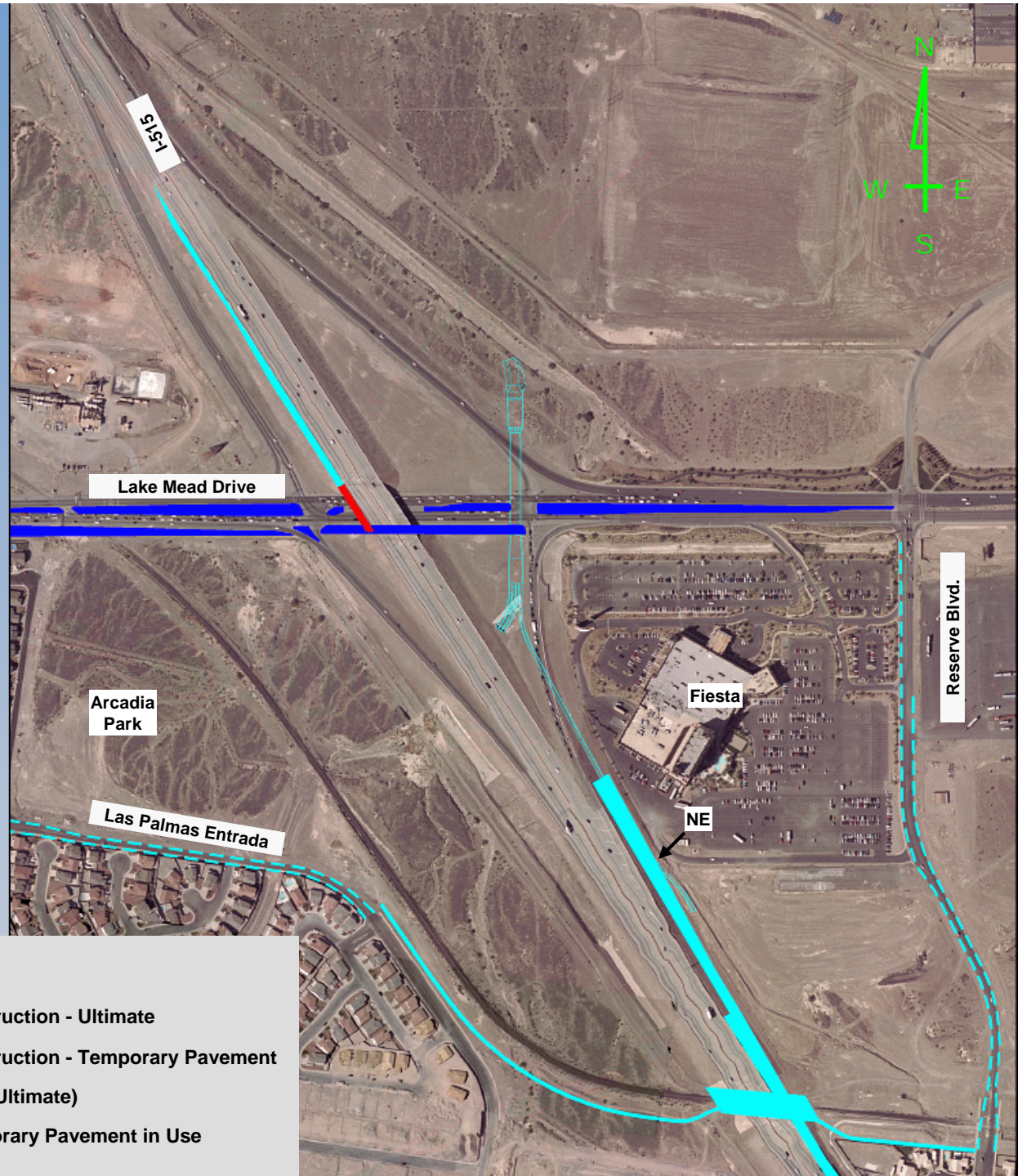
QWE



Legend



- Construction - Ultimate
- Construction - Temporary Pavement
- Built (Ultimate)
- Temporary Pavement in Use





QWE

I-1464 Bridge



QWE

NW Ramp Complete



Stage 3 Construction

- **Finish construction of the “EN” ramp**
- **Start construction of the “ES” ramp**
- **Finish construction of I-215/Lake Mead Drive**
- **Construct Gibson ramps 2 and 3**



QWE

NW Ramp / G-1958 Bridge





QWE

ES Frame 2



Stage 4 Construction

- Finish construction of the “SE” and “ES” ramps
- Complete “WS”, “SW” and “WN” ramps

**End of Presentation
Thank You!**