

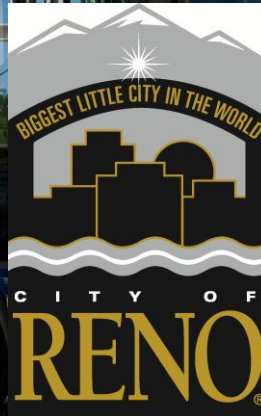
Regional Transportation Commission of Washoe County Governance

The RTC is a cooperative regional board comprised of five representatives appointed from the three local government jurisdictions.



The background image shows a green RTC Rapid bus at a modern transit station. A person is standing near the bus. Overlaid on the image are three logos: the Washoe County, Nevada seal (a blue circle with a green tree and the text 'WASHOE COUNTY, NEVADA' and '1861'), the City of Reno logo (a black silhouette of a city with the text 'BIGGEST LITTLE CITY IN THE WORLD' and 'CITY OF RENO'), and the City of Sparks logo (a green and orange sunburst with the text 'City of Sparks'). The bus has 'RTC RAPID' written on its side and a Nevada license plate '59474'.

The RTC is a cooperative regional board comprised of five representatives appointed from the three local government jurisdictions.



RTC Guiding Principles



- **Safe & Healthy Communities**
- Economic Development & Diversification
- Sustainability
- Increased Travel Choices

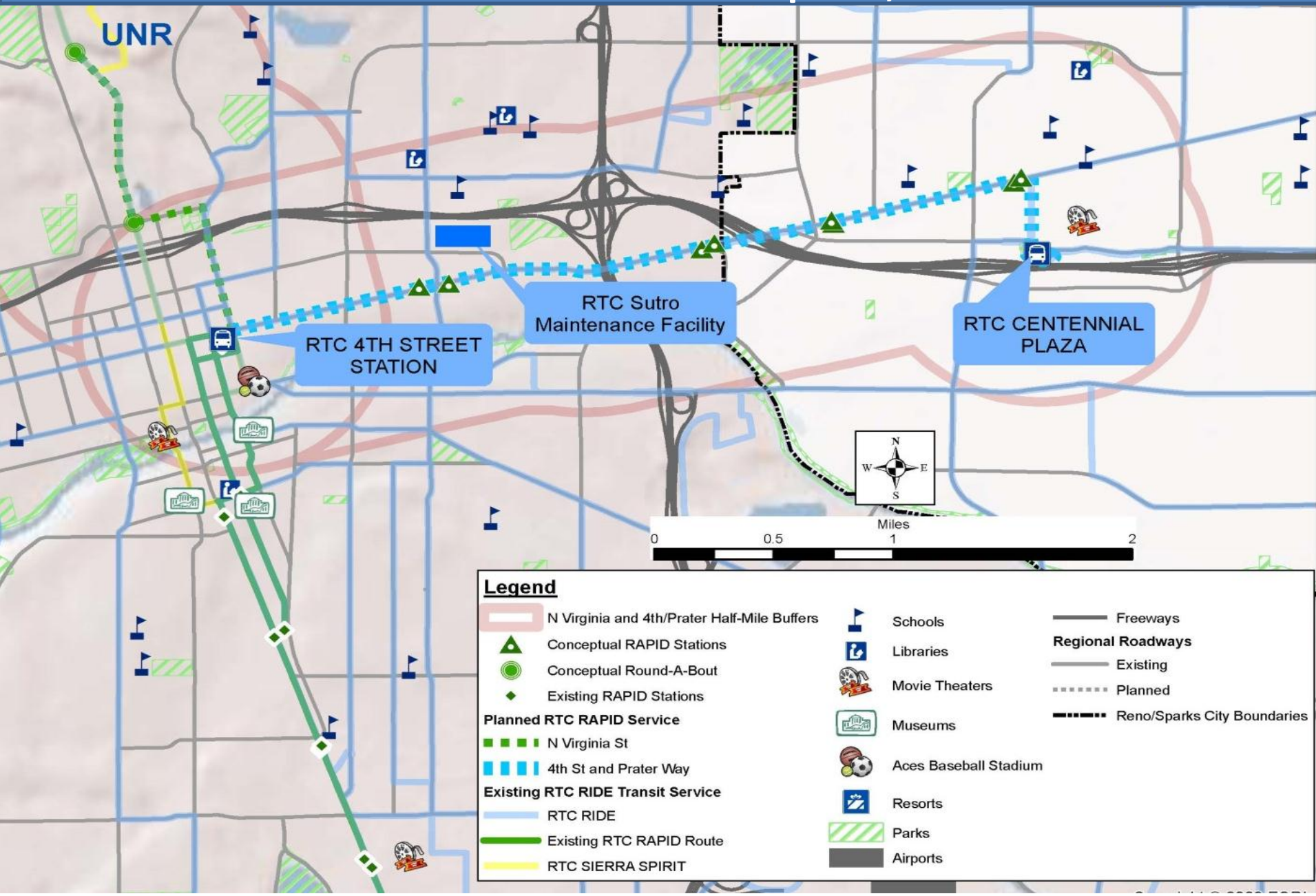
A photograph of a family—a woman, a man, and a young child—sitting on a black metal bench at a transit station. The woman is on the left, wearing a light blue jacket and black pants. The child is in the middle, wearing a purple jacket. The man is on the right, wearing a dark jacket and blue jeans. Behind them is a white and green RAPID bus with the text 'RAPID', 'rtwashoe.com', and '348-RIDE' on its side. The background shows a city street with buildings and a bridge structure.

4th Street/Prater Way Bus RAPID Transit Project

**Connecting Reno &
Sparks, Nevada with:**

- **RAPID transit**
- **Sidewalks**
- **Bike Lanes**
- **Signal/ITS upgrades**

Project Area: 4th Street at Evans Avenue in Reno, Nevada to RTC CENTENNIAL PLAZA in Sparks, Nevada



8 RAPID stations:

- Level boarding
- Next-bus ITS technology
- Off board ticket purchase
- Interpretive historical art elements



CONCEPT A

Structure Cost - \$\$
 Interpretive Cost - \$
 Total Cost - \$\$\$



CONCEPT B

Structure Cost - \$
 Interpretive Cost - \$\$
 Total Cost - \$\$\$



CONCEPT C

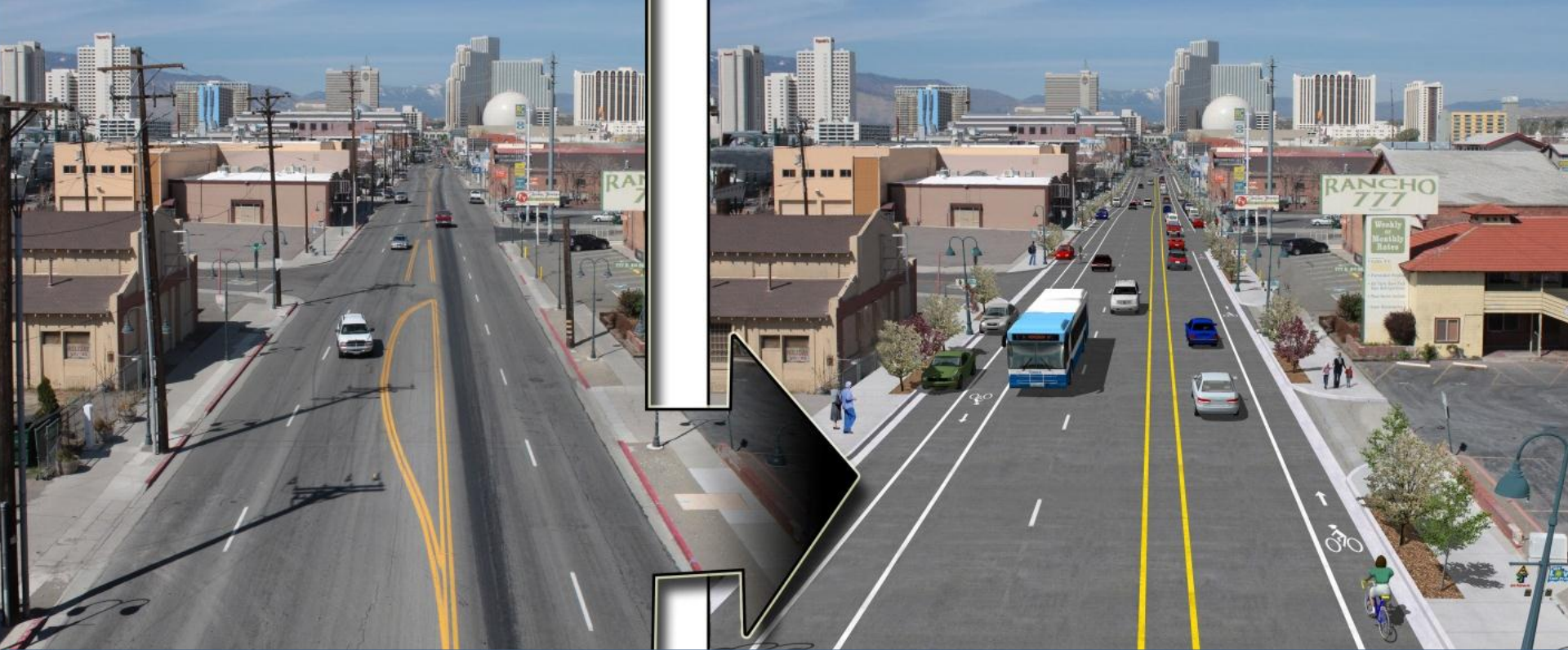
Structure Cost - \$\$\$
 Interpretive Cost - \$
 Total Cost - \$\$\$\$



Expansion of the RTC Electric Bus Program:

- 4 electric buses
- FastFill™ charging station at transit center



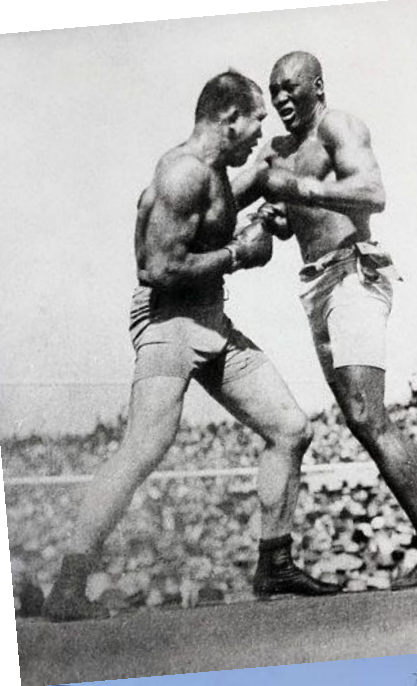


- ## Supporting Access to Transit through:
- Accessible sidewalks
 - Bike lanes
 - ITS upgrades/transit signal priority



Comprehensive Performance Reporting:

- Safety
- Transit ridership
- Fuel use
- Bike & pedestrian counts



Integrating Community Outreach through the 4th Street/Prater Way History Project

<http://renohistorical.org/items/show/31#.VK8O8W7TI9A>

A Community-Wide Collaboration

The 4th Street | Prater Way History Project was initiated by RTC of Washoe County to research the history of the 4th Street|Prater Way corridor and collaborate with the community to tell its story. Major partners include Nevada Humanities, the Nevada Historical Society, the Special Collections Department of the University of Nevada, Reno Libraries, the Sparks Museum & Cultural Center, the Historic Reno Preservation Society, Reno Historical, and many generous community members!

[LEARN MORE](#)

Hear and read firsthand stories about the corridor, its places, and people

Ed Scalzo, Owner, Forever Yours Fine Furniture

[Ed Scalzo](#) and his wife , Susan, own Forever Yours Fine Furniture, located in the historic Flanigan Warehouse building at 701 East Fourth Street. They started the business in 1976 in Kings Beach, Lake Tahoe, moving to an old Ford dealership building on Virginia and Fourth Streets in Reno in 1980....

[VIEW ALL](#)



4TH STREET | PRATER WAY HISTORY

Historic Corridor | Corredor Histórico

The 4th Street Historic Corridor is a vibrant area of historic architecture, commerce, and culture. It is a key part of the city's historic district and is home to many of the city's most important landmarks.

1868 The city of Reno is founded. The city is located on the Nevada-Sagehen River.

1868 The city of Reno is founded. The city is located on the Nevada-Sagehen River.

1904 - 1922 The city of Reno is founded. The city is located on the Nevada-Sagehen River.

The Incomparable PRIZE FIGHT
C. L. B. & Co. 1910





1913 The city of Reno is founded. The city is located on the Nevada-Sagehen River.

1921 The city of Reno is founded. The city is located on the Nevada-Sagehen River.

1922 The city of Reno is founded. The city is located on the Nevada-Sagehen River.





1928 - 1924 The city of Reno is founded. The city is located on the Nevada-Sagehen River.

1924 The city of Reno is founded. The city is located on the Nevada-Sagehen River.

2000 The city of Reno is founded. The city is located on the Nevada-Sagehen River.





A woman with curly red hair, wearing a white sleeveless shirt and orange pants, is sitting on a metal bench at a transit station. She is smiling and looking to her right. A black bag is resting on her lap. The background shows a modern building with large glass windows and metal frames.

Building Ladders of Opportunity by:

- **Connecting 6,700 corridor residents to the over 38,000 jobs on the existing Virginia Street RAPID route**
- **Linking to routes serving the University of Nevada, Reno and Truckee Meadows Community College**
- **Serving a corridor where 59% of households have incomes below \$20,000**

Next Steps:

- **Complete Final Design**
 - Utility design
 - Station design
 - Community outreach
 - Monitor performance

