

SOUTHEAST CONNECTOR

p
a
r
k
s

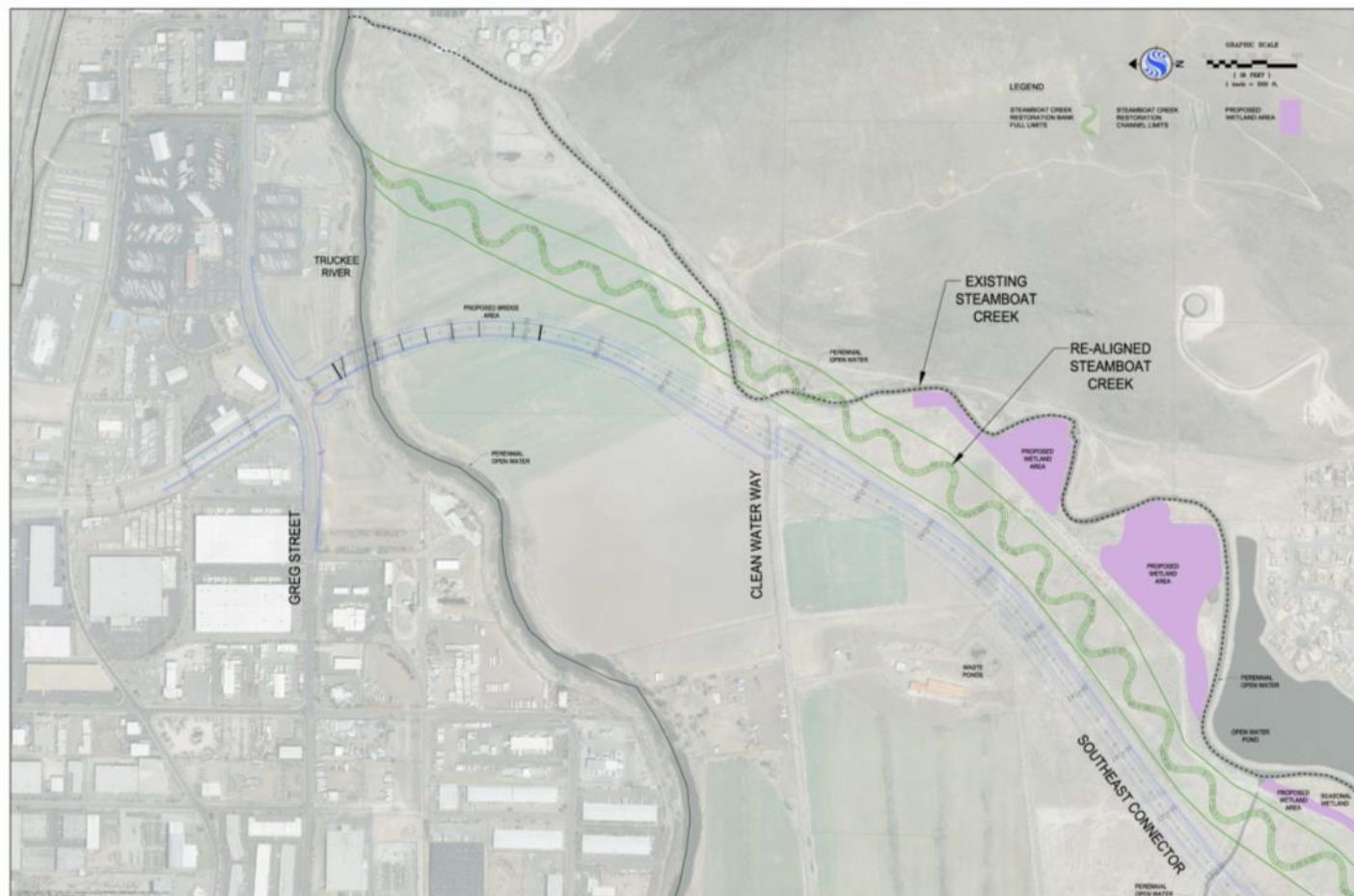
e
n
o



Regional Transportation Commission of Washoe County



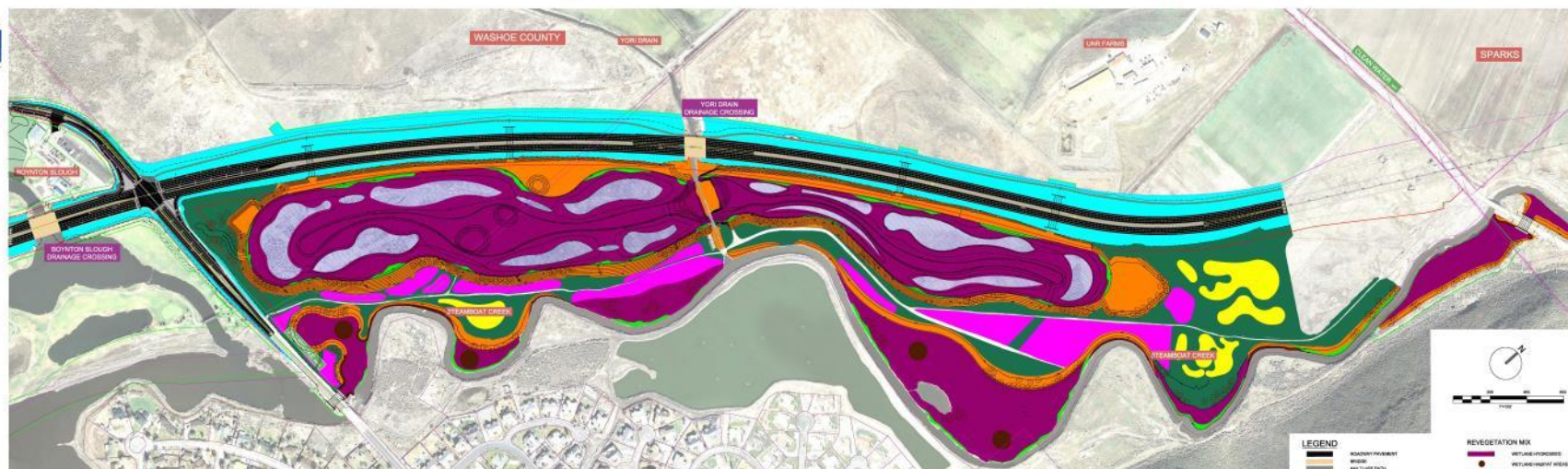
March 3, 2015



SOUTHEAST CONNECTOR

CLEAN WATER WAY TO GREG STREET

DRAFT  

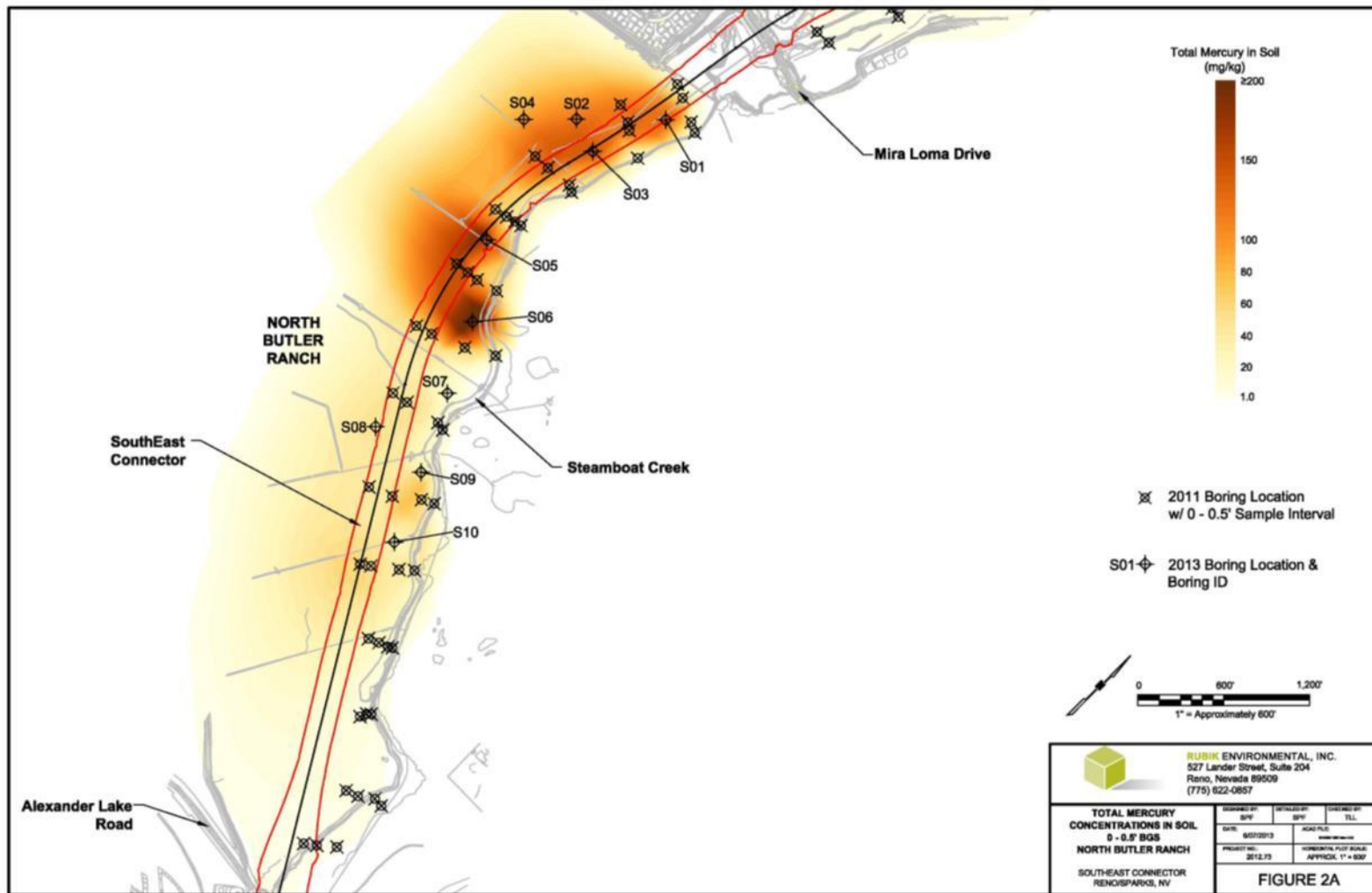


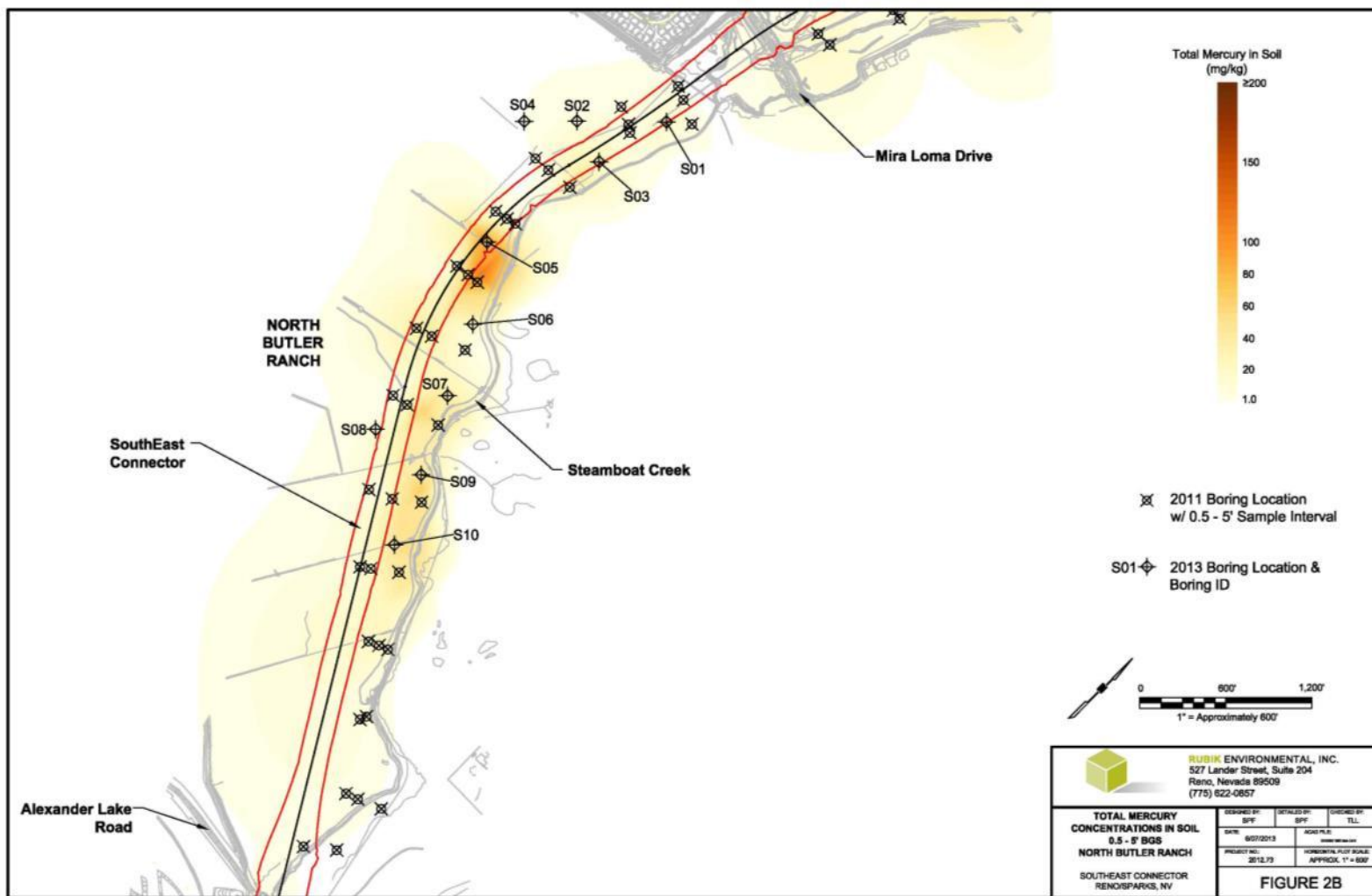
PEMBROKE DRIVE TO CLEAN WATER WAY (PHASE 1) SOUTHEAST CONNECTOR PHASE 2 ALIGNMENT

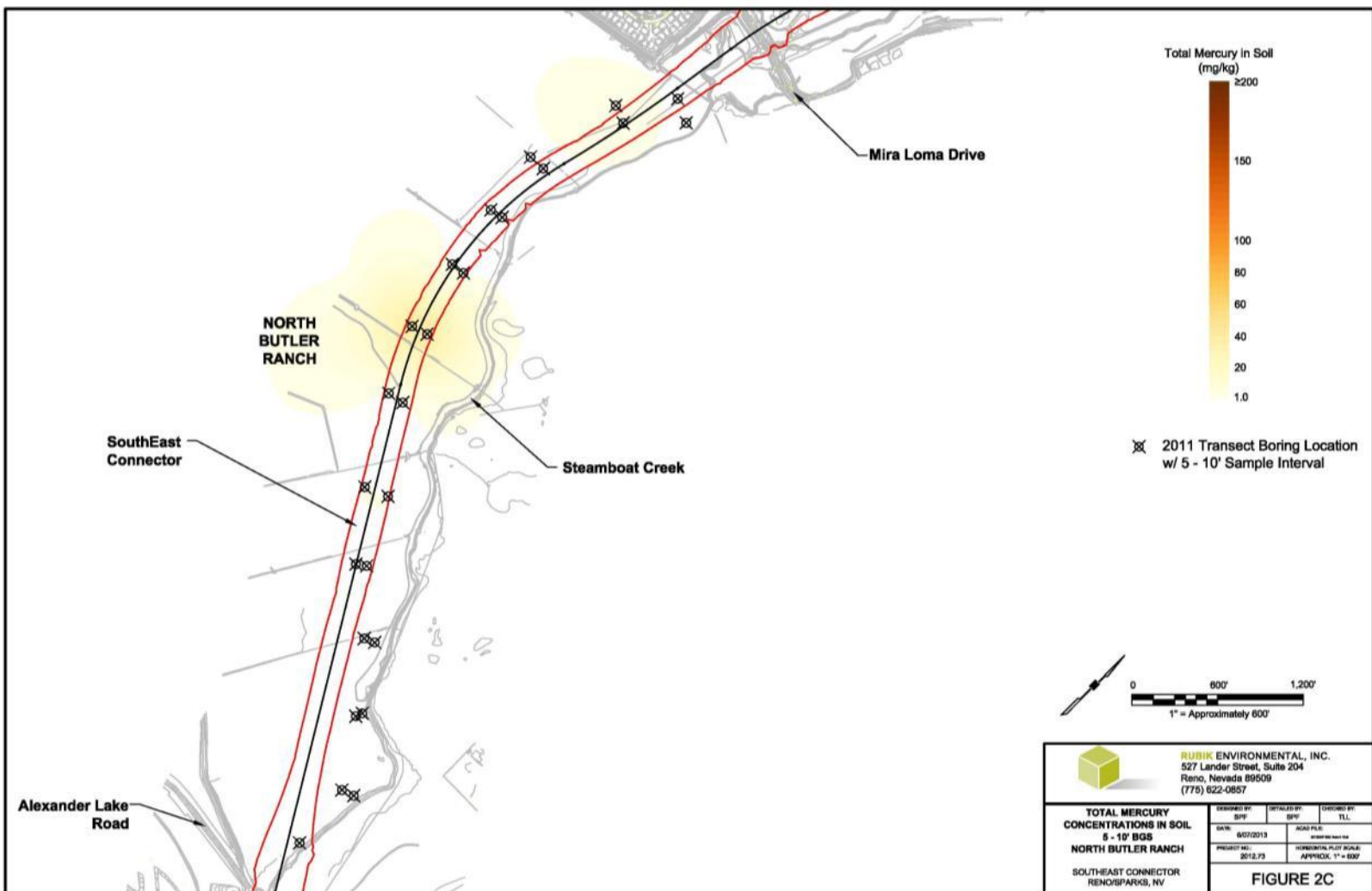
CH2MHILL

PRELIMINARY - NOT FOR CONSTRUCTION









Soil Containing Mercury



- Category 1 Mercury Placement
- Category 2 Mercury Placement

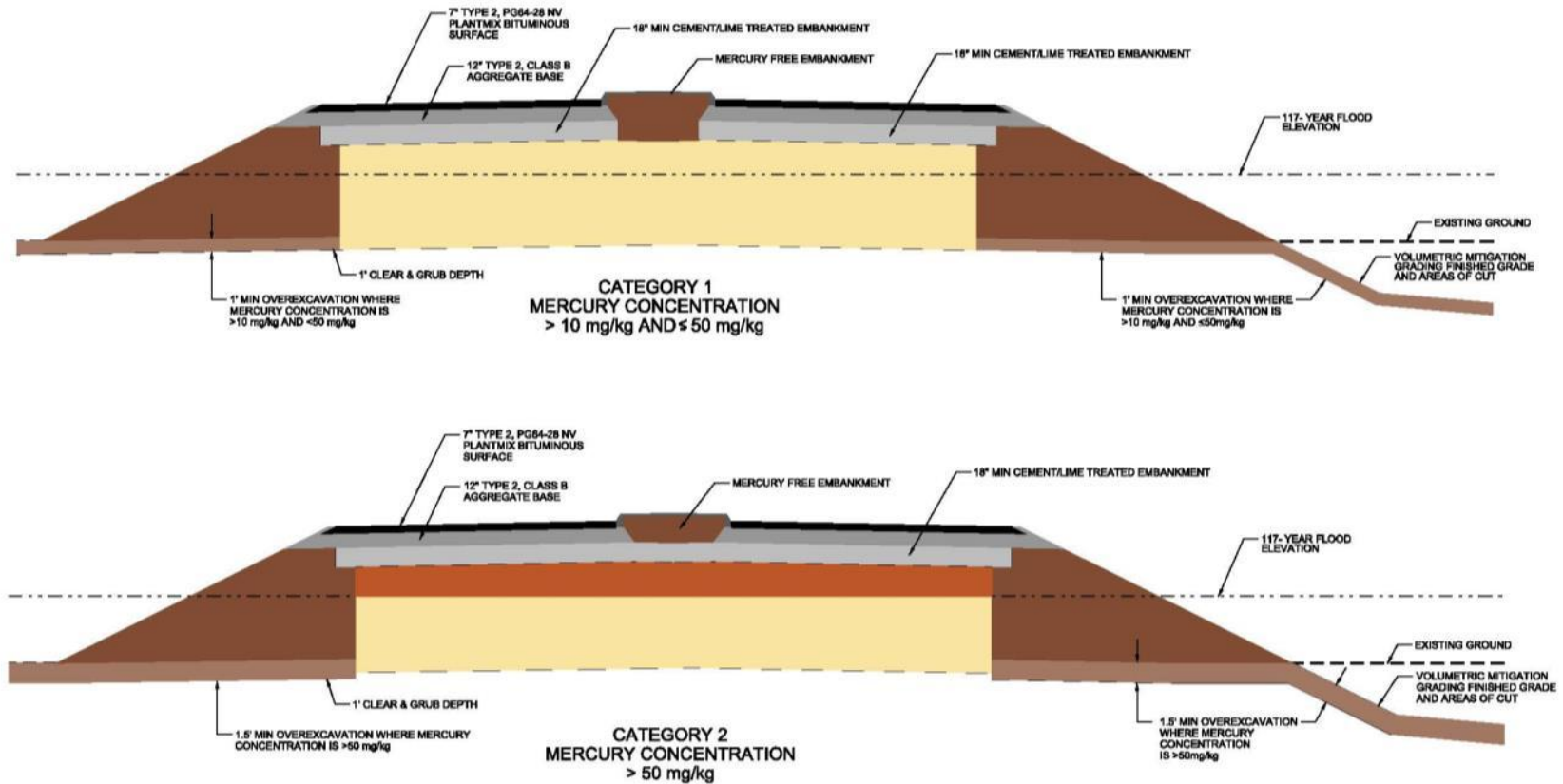
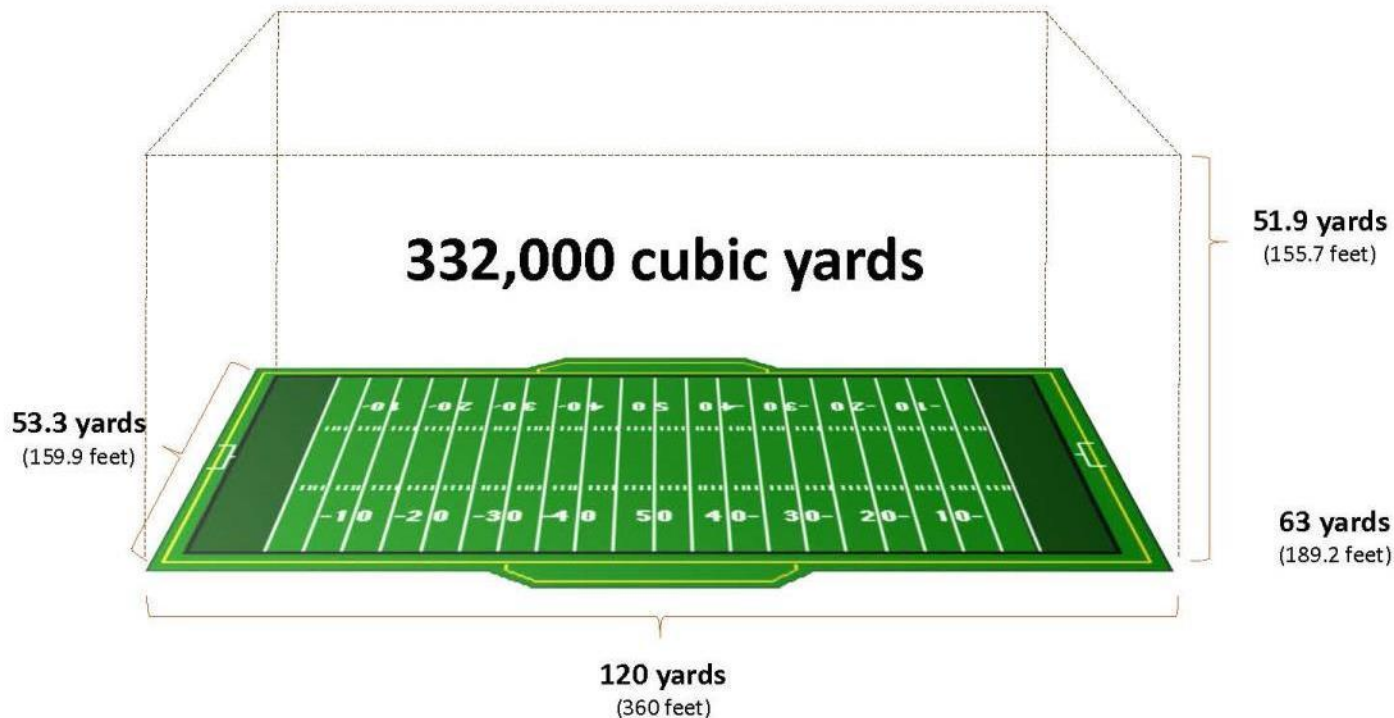


Figure 1
Geometry of Soil Placement

Volume of Soil Containing Mercury



Total Volume of Excavated Soil Containing Mercury (Hg)
for SouthEast Connector Flood Mitigation



Reno City Hall



Mercury Quantities



**Total Estimated Volume of Mercury (Hg) Removed
= 10,000 kilograms (195.2 gallons)**

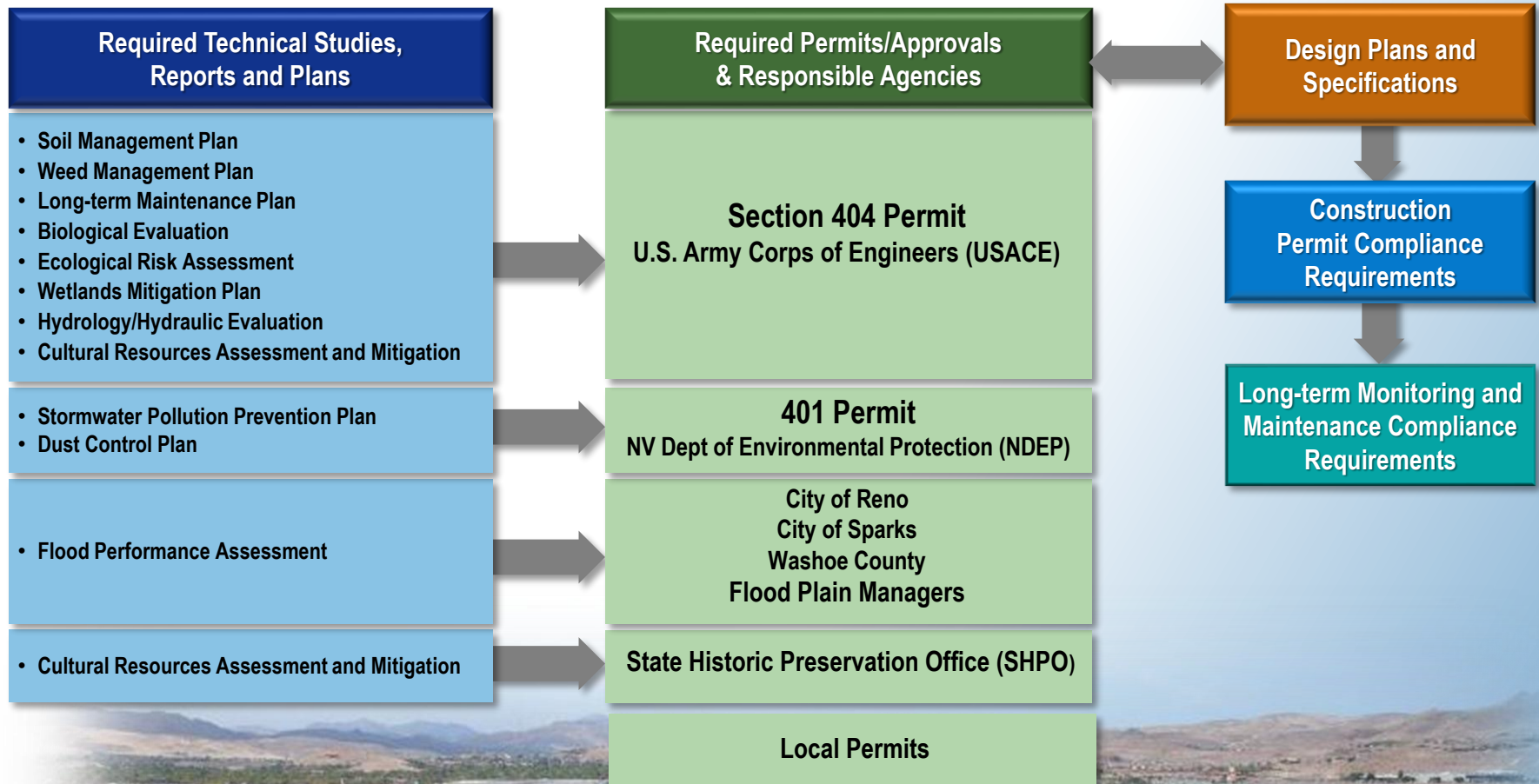


**Approximately 39
5-gallon buckets**

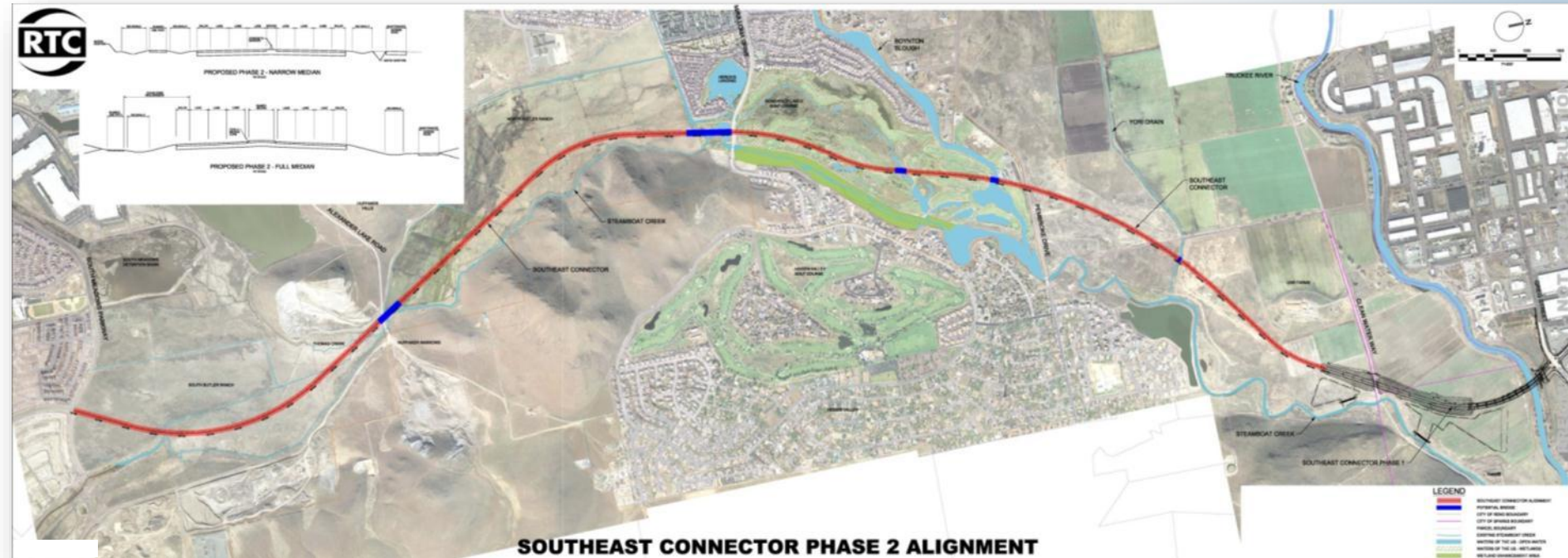
**Total Estimated Volume of Mercury (Hg)
Re-deposited Over Time from Existing Upstream Sources
= 43 kilograms (0.84 gallons) per 100 years**



Permitting Process to Support Project Development



Project Overview: SouthEast Connector Alignment



Phase 2

Phase 1

SOUTHEAST CONNECTOR



Garth Oksol, P.E.
Project Manager
775-332-2137
goksol@rtcwashoe.com

www.southeastconnector.com



This is Your RTC.

rtcwashoe.com



You The YouTube logo, which includes the word "You" in black and "Tube" in white inside a red rounded rectangle.