

FUEL REVENUE INDEXING

Mike Hand, PE
April 8, 2014



RTCSNV.COM/FRI



WHO WE ARE



RTC

RTCSNV.COM



Transit Authority



Transit

**Traffic Management
Systems**



FAST

**Transportation Planning
& Funding Agency**



MPO



WHAT IS FRI?

Ties a 3-cent per gallon fuel tax to the rate of inflation for the next three years.

Cost to average driver:
a dime a day



WHAT WILL FRI DO?



Over a three-year period,
the RTC expects to bond approximately

\$700 MILLION

To build

183 TRANSPORTATION
PROJECTS

That will create

8,931 - 9,467 JOBS

direct, indirect and induced

With construction
starting in

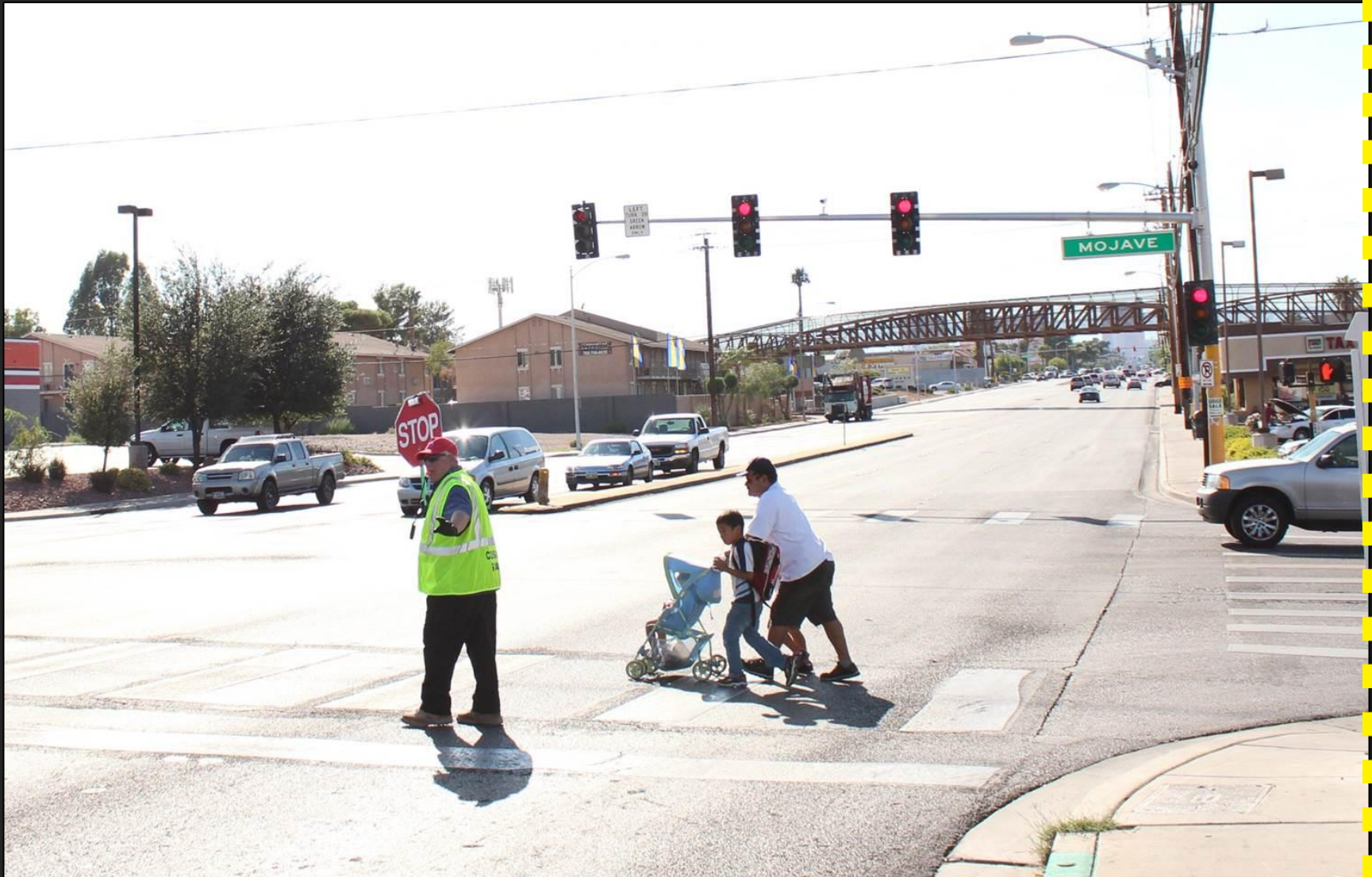
SPRING 2014

**PROJECTS
EXPECTED TO START
CONSTRUCTION
THIS SPRING**



IMMEDIATE PROJECT

Desert Inn Rd.



IMMEDIATE PROJECT

Lamb Blvd.



IMMEDIATE PROJECT

Fort Apache and Durango Bridge



IMMEDIATE PROJECT

Downtown Henderson



IMMEDIATE PROJECT
Arroyo Grande Blvd.



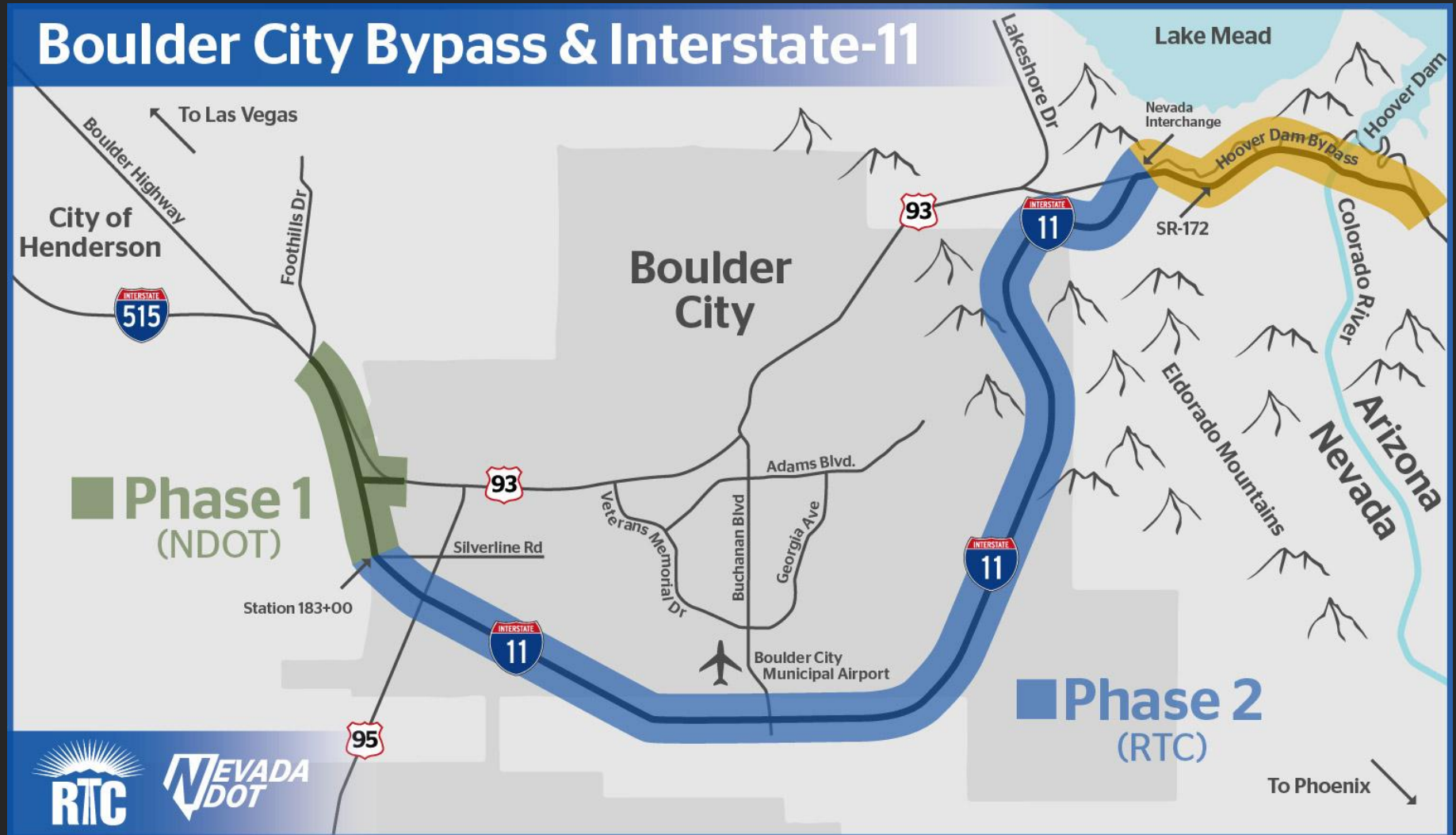
IMMEDIATE PROJECT

High View Dr.



REGIONALLY SIGNIFICANT PROJECT

I-11 Phase 1 & 2



REGIONALLY SIGNIFICANT PROJECT

I-11 Phase 1 & 2



REGIONALLY SIGNIFICANT PROJECT

I-11 Phase 1 & 2



LOCAL RESOLUTION 315

Supports and encourages the hiring of local workers, contractors and small business, minority-owned and women-owned sub-contractors.



LOCAL SMALL BUSINESS & MINORITY INCLUSION PROGRAM



VISION & MISSION

Provide local small businesses, minority contractors, apprentices and engineering students opportunities to be included and benefit from FRI projects.

LOCAL SMALL BUSINESS & MINORITY INCLUSION PROGRAM



OBJECTIVE

The RTC will inform, educate and engage all local small businesses and minority contractors by developing partnerships with “connectors” and small business minority organizations in each community.

CONNECTING THE PROGRAM

*PRIME
CONTRACTORS*

AGC
Clark County
City of Las Vegas
City of North Las Vegas
Henderson
Boulder City



CONNECTING THE PROGRAM



*SMALL BUSINESS, MINORITY
AND WOMEN-OWNED ORG.*

Small Business Administration
Akers & Associates
Asian Chamber
Latin Chamber
NAMC
Urban Chamber
NDOT
NAWBO
Women In Construction
NSBDC



CONNECTING THE PROGRAM



WORKFORCE CONNECTORS

Workforce Connections

Nevada Partners

Las Vegas Urban League

Latin Chamber

Foundation Associated Builders & Contractors

Operating Engineers Journeyman &

Apprenticeship Training Committee

CONNECTING THE PROGRAM

PUBLIC WORKS ENTITIES

Clark County
City of Las Vegas
City of North Las Vegas
Henderson



CONNECTING THE PROGRAM



STATE AND LOCAL AGENCIES

State Contractor's Board
Secretary of State Business License Dept.
Local Government Entity Business License Dept.

CREATING A TURNKEY PROGRAM



Resolution Adopted

Resolution Included in Bid Documents

Hosted Roundtable with Connectors

Development of Local Small Business, Minority and Women-Owned Enterprise List, Included in Bid Documents

Development of Training and inclusion in Bid Documents

Development of Public Outreach Component and inclusion in Bid Documents

Development of small business survey and inclusion in Bid Documents

Communicating with Connectors, Updating Website, Monitoring of Projects, etc.

ROADMAP



REGIONAL TRANSPORTATION COMMISSION

FUEL REVENUE INDEXING PROJECTS

*LOCAL GOVERNMENT
ENTITIES*

PRIME CONNECTORS

*LOCAL SMALL BUSINESSES,
WOMEN, AND MINORITY
OWNED BUSINESSES*

*WORKFORCE
DEVELOPMENT, TRAINING &
INTERNSHIP PROGRAMS*



ANNOUNCEMENTS: [2014 Earth Day art contest...](#)

PLAN YOUR TRIP



[View Routes & Schedules](#)

From:

To:

☒ Depart at or ☐ Arrive by



[Go!](#)

NEW ROUTE 120
ON FORTAPACHE & BUFFALO
FREE RIDES!
MARCH 2-8



**FUEL
REVENUE
INDEXING**



ABOUT



PROJECTS



FAQ



CONTACT



How the Fuel Revenue Index is Fueling Our Future

During the Clark County Commission's September 3 meeting, the Board of Commissioners approved an ordinance that will index the fuel tax to inflation in Clark County, generating up to \$700 million in bonding capacity. This revenue will fund 185 regionally and locally significant transportation projects throughout Southern Nevada and create between 8,931 and 9,467 jobs starting in spring 2014.

Indexing fuel revenues is the practice of tying the fuel tax to the rate of inflation to provide funds for transportation infrastructure projects. The Fuel tax is a common phrase describing the amount we all pay when we buy gas to fill-up our cars, busses and trucks.

The ordinance will go into effect Jan. 1, 2014 and last through Dec. 31, 2016, resulting in an approximate three-cent increase per gallon of gas per year. As a result, the annual impact to an average driver in Southern Nevada equates to roughly a dime a day over the next three years.

Over the next three years, the local community will be making a local investment into Southern Nevada's future creating needed jobs for people that will build, maintain and enhance transportation infrastructure; improve overall commute times; accommodate growth; diversify the economy; and help ensure Southern Nevada's community is able to compete globally with other communities.

The Regional Transportation Commission of Southern Nevada (RTC), both the local transportation planning agency and the regional traffic management agency, will work with the jurisdictions to fund the design and construction of transportation projects utilizing fuel indexing revenues. Without indexing, the RTC was forecasting only \$22.4 million a year over the next 10 years, in available funds for street and highway projects, which is only enough to build one interchange per year, one mile of roadway per year in each jurisdiction, or one beltway segment without bridges per year.

Note: Data associated with jobs, projects and bonding revenues could change pending variables that impact the economic environment, including: ten-year rolling average of the PPI (Producer Price Index), interest rates, fuel consumption, etc. For more information, please email the RTC at: RTCFRI@rtcnev.com or call (702) 676-1754.



FUEL REVENUE INDEXING

Small Business & Minority Directory

[Get Notified of Updates](#)

- [Local Small Business Enterprises Involved in Highway, Street, and Bridge Construction and Related Fields Directory \(PDF\)](#)

Project Lists

DATES AND INFORMATION SHOWN ARE SUBJECT TO CHANGE. PLEASE CONTACT THE ENTITY ISSUING THE BID FOR THE LATEST DETAILS.

[RTC Board Approved Fuel Revenue Index Project List](#) (Updated February 13, 2014)

[RTC Board Approved Authorizations to Proceed Project List](#) (Updated February 18, 2014)

Links

- [UNLV College of Engineering Internship Program \(PDF\)](#)

Fuel Revenue Indexing Project Listing Search Tool

Show entries

Search all columns:

Entity

Project

Boulder City		Interstate 11, US-95 to Hoover Dam Bridge
Boulder City		Interstate 11, US-95 to Hoover Dam Bridge
Clark County		CC-215, Decatur Blvd to N 5th St
Clark County		CC-215, Ft. Apache Rd Bridge/Durango Dr Bridge
Clark County		CC-215, Grand Montecito Pkwy Bridge
Clark County		CC-215, Airport Connector Ph. II
Clark County		Durango Dr, Blue Diamond Rd to Windmill La
Clark County		Tropicana Ave, Hualapai Wy to Fort Apache Rd
Clark County		Rainbow Blvd, Erie Ave to Blue Diamond Rd
Clark County		Desert Inn Rd, Paradise Rd to Mojave Rd
Clark County		Durango Dr, Tropicana Ave to Spring Mountain Rd
Clark County		Lamb Blvd, Owens Ave to Las Vegas Blvd
Clark County		Las Vegas Blvd, St. Rose Pkwy to Silverado Ranch Blvd
Clark County		Jones Blvd, Blue Diamond Rd to Wigwam Pkwy

CONCLUSION

In 2014, the RTC will bond \$223 million for Southern Nevada transportation projects, allowing us to begin design or construction on 158 projects.



THANK YOU



RTCSNV.COM/FRI

