



Regional Transportation
Commission of Washoe County

Washoe County Indexed Fuel Tax

April 8, 2014

What is RTC-5?

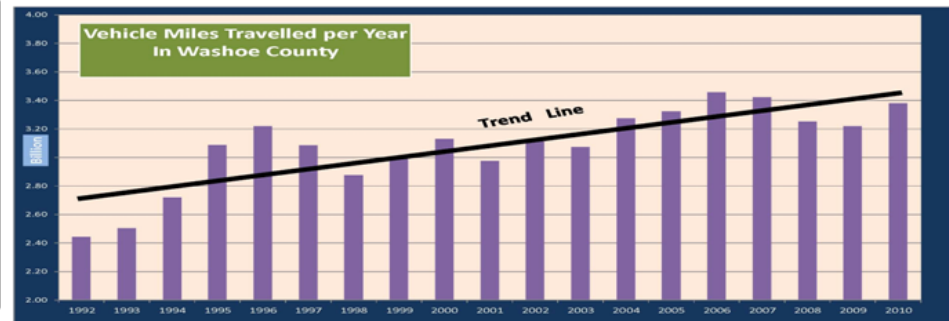
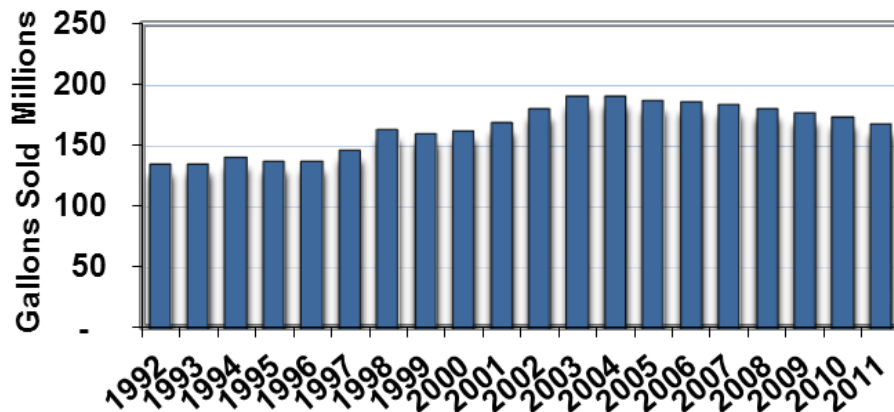
SB201 Effective January 1, 2010

Indexed fuel taxes for PPI

- Provides an annual adjustment based upon a 10-year average of the PPI for Street and Highway construction.
- Cumulative tax and the total increase is the difference between the base-tax rates for the County and cumulative PPI increases calculated each year.
- Direct benefits to economy, employment, wages, personal income.
- Indirect benefits.

RTC-5 Indexed Fuel Taxes

- Voters approved advisory ballot in November 2008
- S.B. 201 passed by 75th Session of the Nevada Legislature
- Washoe County implemented ordinance in August 2009
- Index Rates effective January 2010
- Four Bond Sales – All pledged by indexed fuel tax



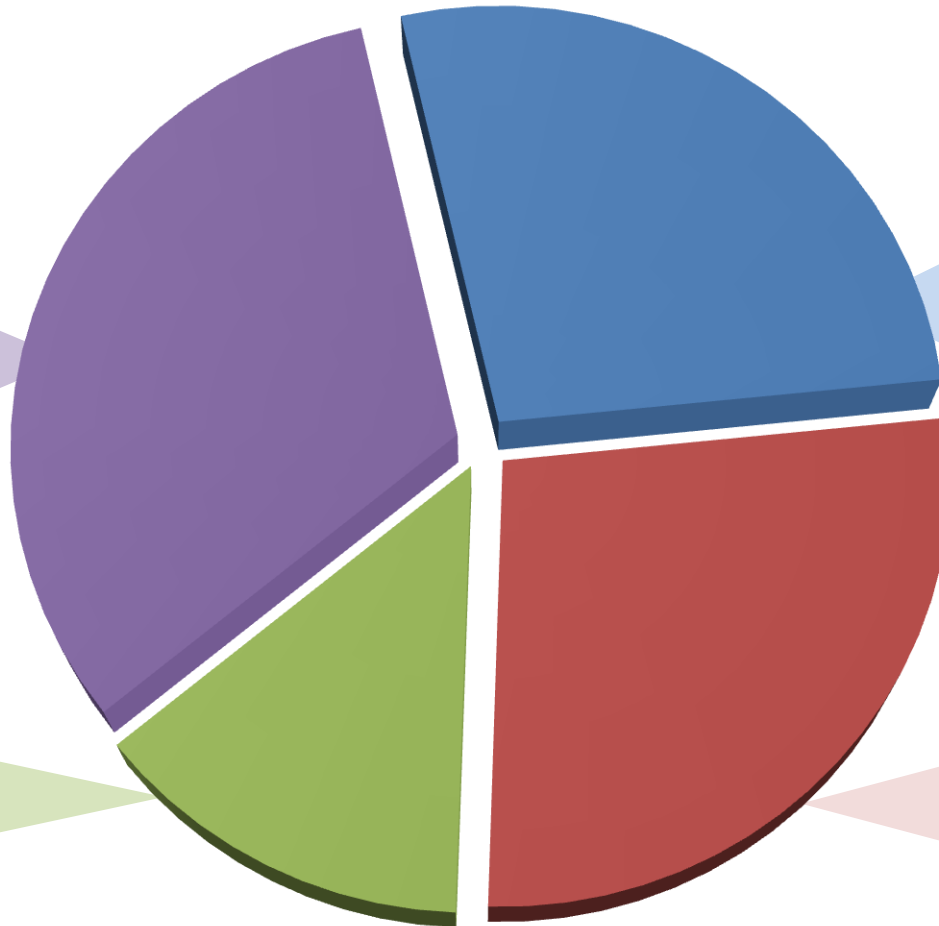
Washoe County Gas Tax 2013/2014

(72.315 cents)

**RTC County
Optional
Plus Inflation
Index 25.64¢
NRS 373
(July 2013 rates)**

**Washoe County
Mandatory Plus
Inflation Index
9.82¢
NRS 365
(July 2013 rates)**

1.25¢ County Only
2.35¢, 1.75¢ & 1.00¢
COR, COS & W.C.



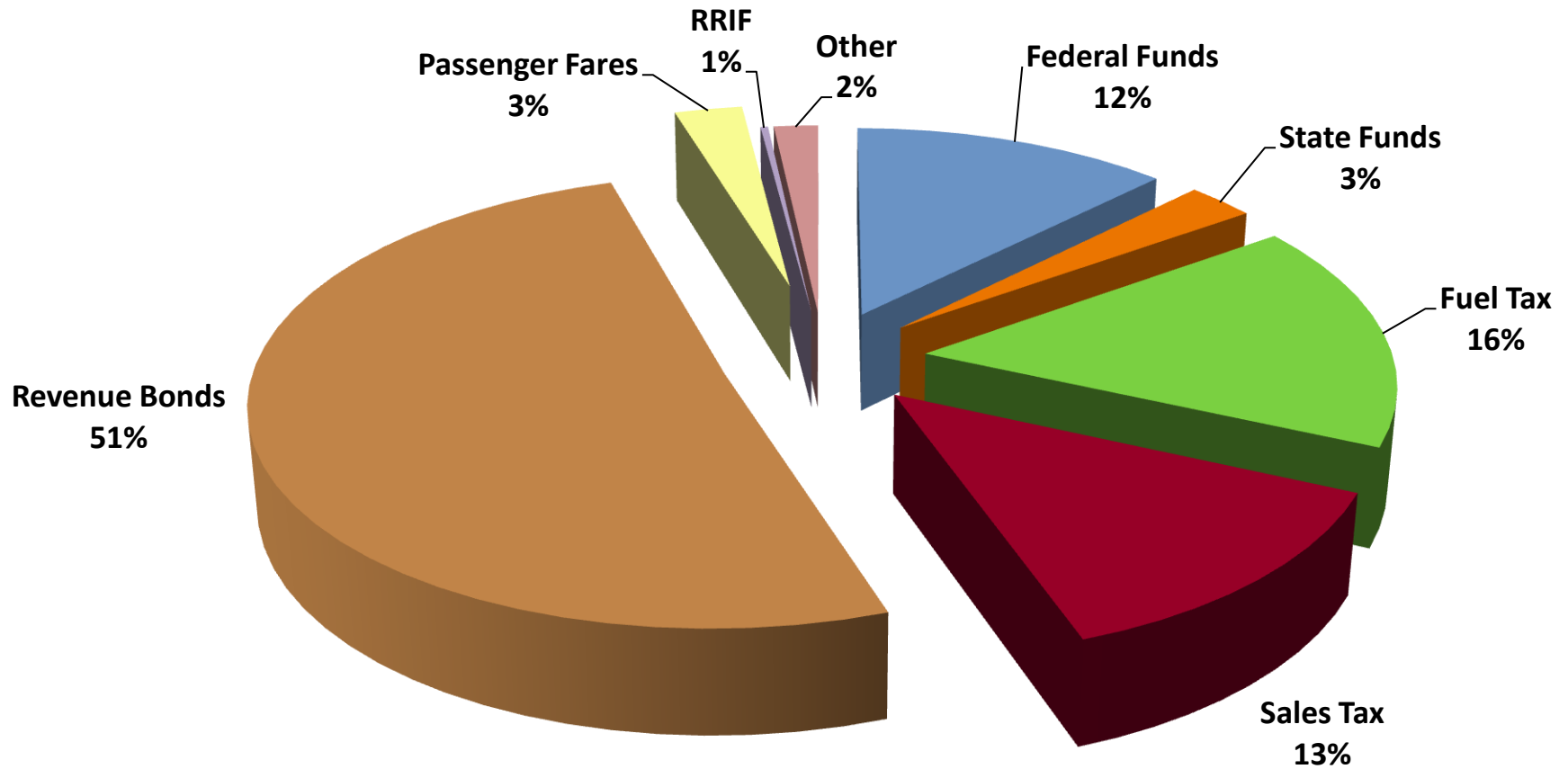
Federal 18.4¢

15.44¢ HTF
2.86¢ MTA
.1¢ Leaking
Underground
Storage Tanks

**State 18.455¢
NRS 365
NRS 590**

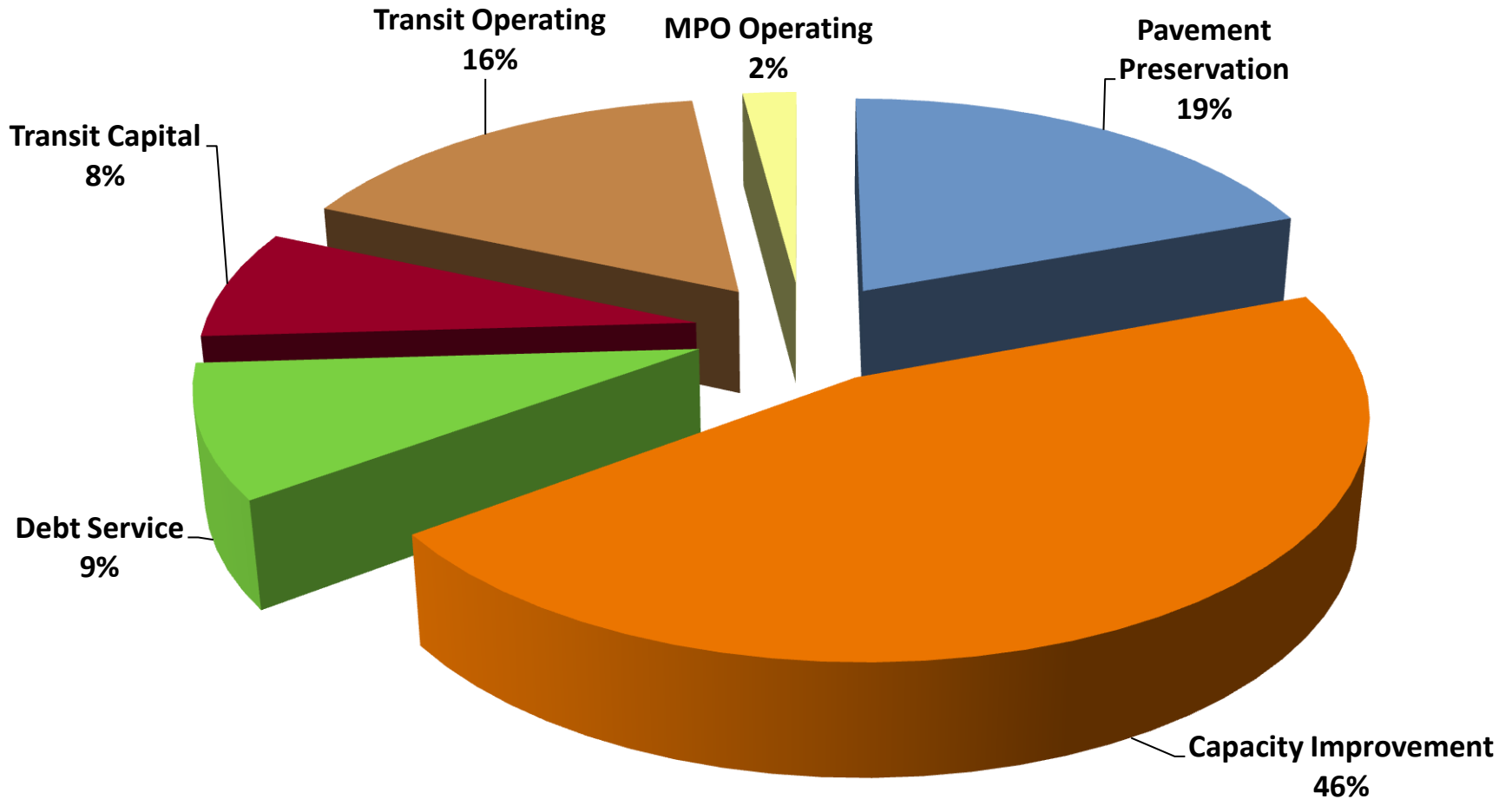
17.650¢ State Highway
Fund
.750¢ Petroleum
Cleanup
.55¢ Inspection fee for
Gasoline

Transportation Funding



Based on FY 2013 Estimates

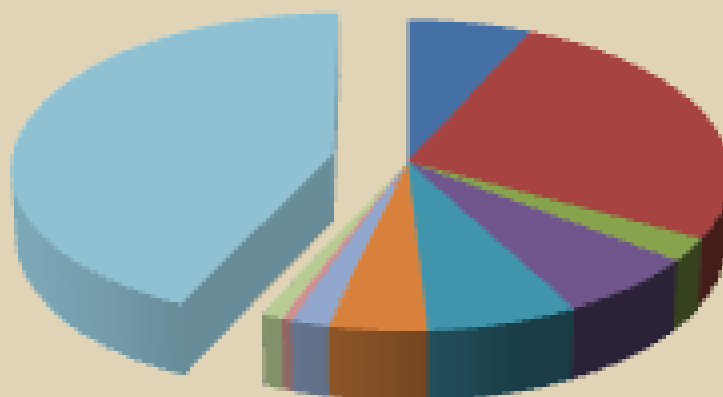
Transportation Spending



Based on FY 2013 Estimates



FY 2014 – EXPENDITURES BY FUNCTION



- Pavement Preserv Projects
- Capacity Improv Projects
- RRIF-Capital Contribution
- Debt Service
- RTC RIDE - Operating
- RTC RIDE - Capital
- Paratransit-Operating
- Paratransit-Capital
- MPO-Operating
- MPO-Capital
- Ending Balance-FY 2014

Pavement Preserv Projects	\$28,501,252	7.4%
Capacity Improv Projects	\$108,226,251	28.1%
RRIF-Capital Contribution	\$9,300,000	2.4%
Debt Service	\$25,235,640	6.6%
RTC RIDE - Operating	\$26,829,728	7.0%
RTC RIDE - Capital	\$17,219,723	4.5%
Paratransit-Operating	\$6,731,687	1.8%
Paratransit-Capital	\$1,875,000	0.5%
MPO-Operating	\$4,232,899	1.1%
MPO-Capital	\$36,998	0.01%
Ending Balance-FY 2014	<u>\$156,454,505</u>	40.7%

Total: \$384,643,683

Note: Ending Balance is restricted for road projects, debt service and public transportation.

Ending Balance	
Debt Service	\$25,235,640
Pavement Preserv Projects	\$10,000,000
Capacity Improv Projects	\$100,166,666
Public Transportation	\$2,061,299
MPO	<u>\$166,095</u>
TOTAL	<u>\$156,454,505</u>

*For custodial purposes only, credits are booked as a revenue and expense with net zero effect in the budget and have no cash value.

A photograph of a city street with cars, trees, and buildings in the background. The street is paved with asphalt and has white and yellow lane markings. There are several cars driving on the road, including a red car on the left and a blue car in the center. The background shows tall buildings and green trees under a clear sky.

Benefits of Transportation Spending

- Providing regional connections & neighborhood amenities
- Providing transportation options
- Improving safety & aesthetics
- Saving households money through lower insurance & fuel costs

Funds Collected

2009-2012 \$192.1 M in total Fuel Tax Revenues and Bonds

Indexing provided an additional \$146 M

- \$133 million spent on rehab and preventive maintenance
- \$59 million in bond funded capacity projects
- 1,720 jobs
- \$5.3 million in sales and use tax revenue
- \$1.26 million in construction employees personal spending

Looking Ahead

- 2013-2017
 - \$157,827,299 increment – 1780 jobs, \$5.9 million in sales tax revenue, \$1.31 million in construction employees personal spending
- 2018-2022
 - \$184,076,660 incremental investment – 2,090 jobs, \$6.9 million in personal spending
- 2023-2035
 - \$437,220,136 incremental investment – 4,950 jobs, \$16.3 million in personal spending

Projects Completed

- 300 Reconstructed Lane Miles
- 30 miles of corrective maintenance
- 700 pedestrian ramps
- 377,000 sq. ft of sidewalk
- 136 miles of bike lanes



Regional Road Performance Goals

Average PCI – 70

No More than 5% less than PCI of 50

Current Regional PCI is 85
% Below PCI of 50 is 9%



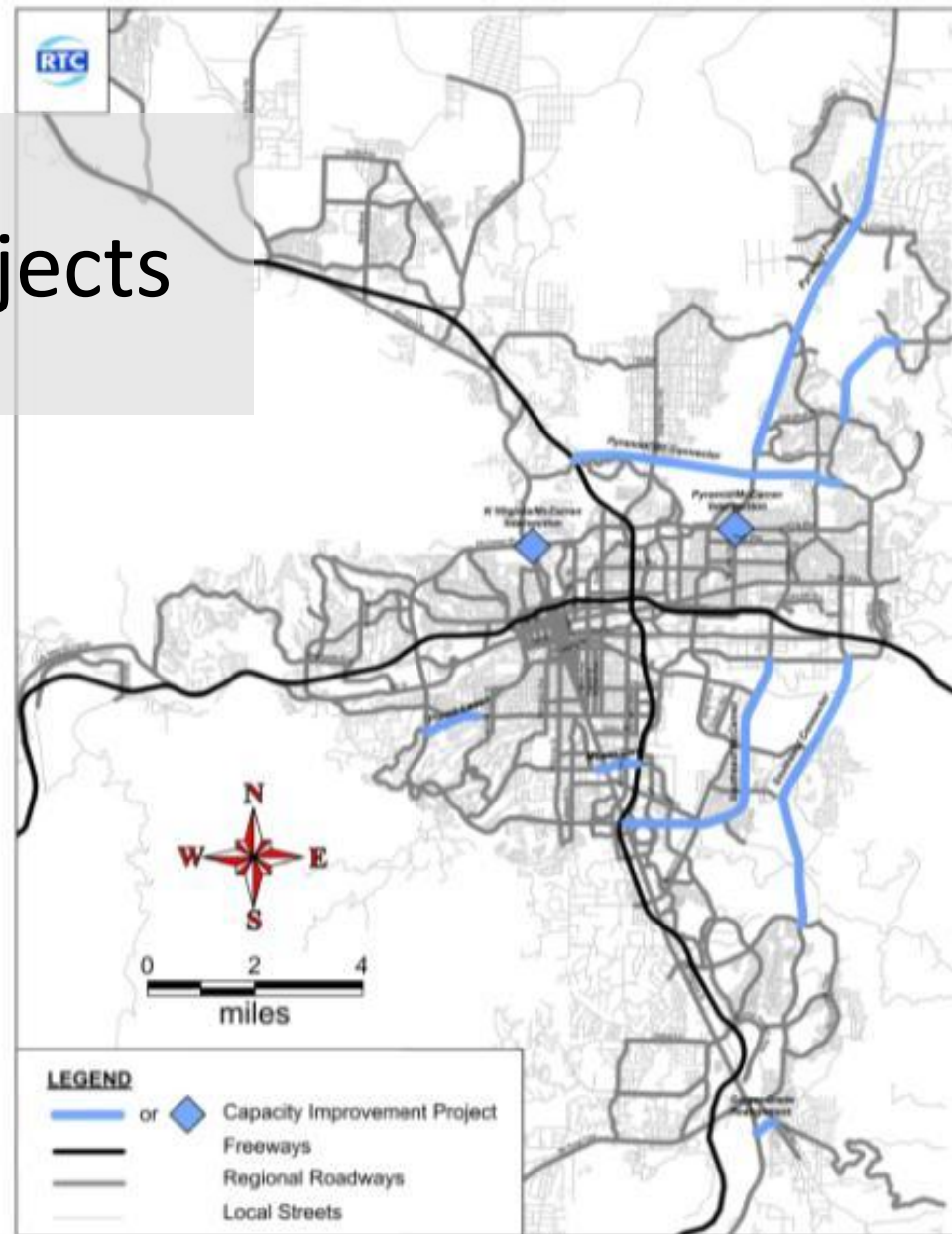
Mobility: Major Projects

Projects Delivered

- Moana Lane Widening
- Southeast McCarran Phase I
- West Plumb Lane

Projects in Development

- SouthEast Connector
- Pyramid/McCarran Intersections
- Pyramid/US 395 Connector
- Southeast McCarran Phase II



Southeast Connector

- 5.5 mile 6 lane arterial
- \$250 million investment in the community



An aerial photograph showing the construction of a large bridge over a river. The bridge deck is partially covered with green safety netting. Construction equipment, including cranes and trucks, is visible on the bridge and the surrounding construction site. The river flows through the center of the image, and the surrounding landscape is a mix of dirt and sparse vegetation.

Southeast Connector

- Truckee River Bridge Project
- \$65 million CMAR Project
- Kiewit Western Company

SOUTHEAST CONNECTOR PHASE 1
TRUCKEE RIVER BRIDGE, JANUARY 6, 2014

Southeast Connector

- Truckee River Bridge Project
 - 2 New Bridges
 - Roadway Embankment
 - Intersection Improvements
 - Flood Volume Mitigation Basins



Southeast Connector

A low-angle shot of a massive red lattice boom crane reaching towards a clear blue sky. The crane's structure is a complex network of red steel beams. In the background, a white lattice boom crane is also visible, and several thick cables hang from the top of the frame.

- 2 Construction Phases
 - Phase 2 - 4.5 miles
 - CMAR - Granite Construction
 - Pre Construction Services

The background of the slide is a photograph of several large construction cranes. The cranes are silhouetted against a bright, hazy sky, likely at sunrise or sunset, with the sun visible in the upper left corner. The cranes' lattice structures are prominent, and their long jibs extend upwards and outwards. The overall tone is industrial and dramatic.

Southeast Connector

- Context Sensitive Design
 - 172 Acres of Wetlands created to mitigate 11 acres of impacts
 - 22,000 lbs of Mercury sequestered
 - Use of Bio-Swales for storm water management
 - Regional Connectivity

Safety: Technology/ITS

Plumb/Harvard/Terminal ITS Project



Safety: Technology/ITS

Freeway Digital
Message Signs



Safety: Complete Streets

- Safer for all users
- May include-
 - adding bike lanes
 - improving sidewalks/ADA
 - narrowing or removing travel lanes
 - transit amenities
 - adding center turn lane
- Proven results since 2004
- Part of all RTC projects

- ✓ Reduce crashes up to 46%
- ✓ Slow vehicle speeds by 20%

Source: UNR Dept. of Civil and Environmental Engineering

Safety: Complete Street Performance

In 2013, RTC added 8.4 miles of bike lanes, constructed over 136,787 square feet of sidewalk, and improved safety through the Complete Streets program.

Location	Before	After	% Change
California/ Mayberry	33.4	19.4	-42%
Arlington	18.6	10.0	-46%
Mill Street	7.7	4.4	-43%
Wells Avenue	123	85	-31%



Washoe County Indexed Fuel Taxes

- Community Investments to preserve and protect the regional road network
- Enhancing our environment and quality of life

***Protecting our
environment.
Preserving our
investments.***

Questions?

RTC of Washoe County Contact Info:

Lee Gibson, AICP LEED ND
Executive Director
lgibson@rtcwashoe.com

Jeff Hale, P.E.
Director of Engineering
jhale@rtcwashoe.com

Michael Moreno
Public Information Officer
mmoreno@rtcwashoe.com

Thank you!

rtcwashoe.com
This is Your RTC.