

# Impacts of VMT Changes by

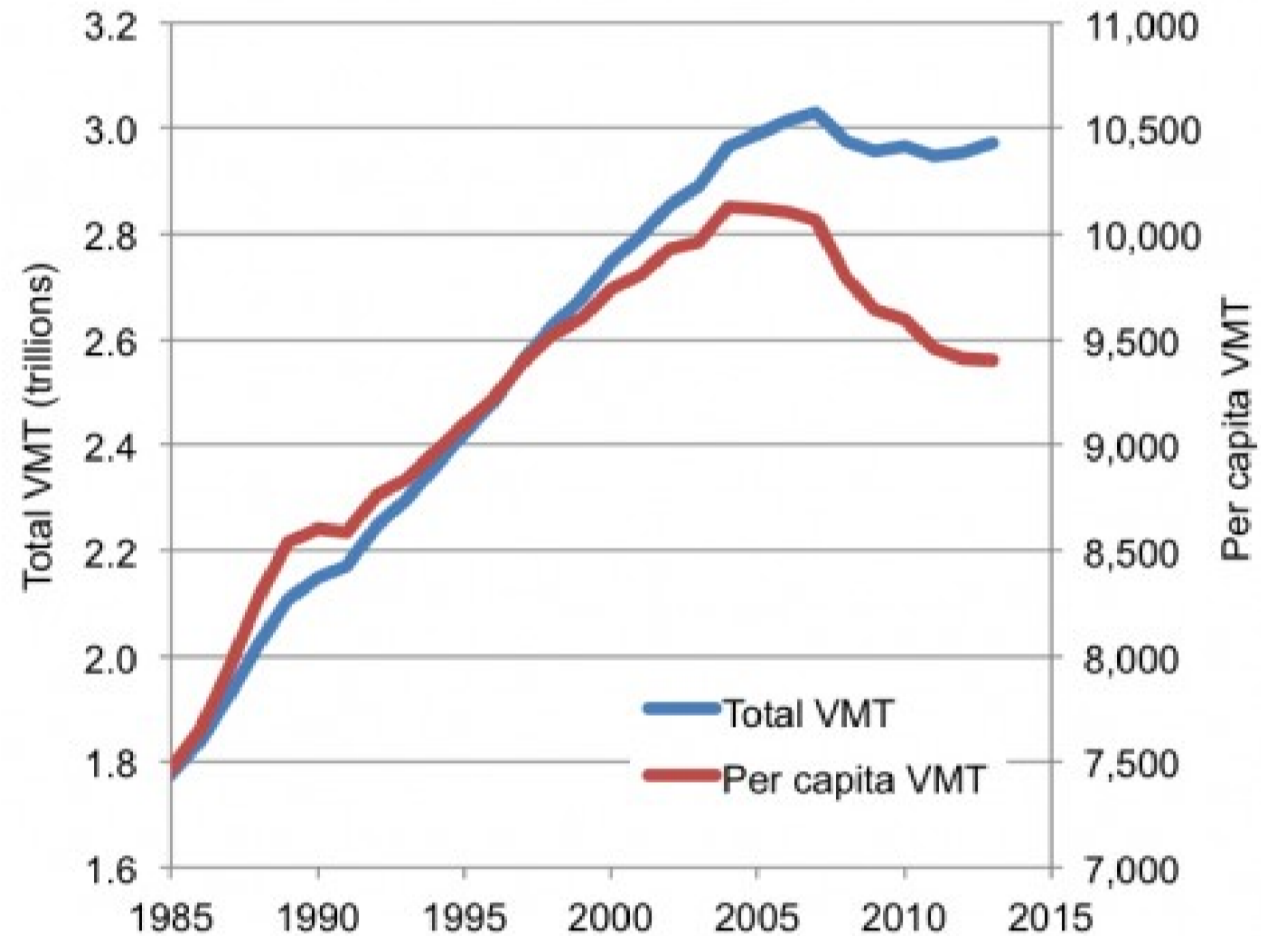
Alexander Paz  
and  
Alauddin Khan

2014 Nevada Transportation Conference  
Las Vegas

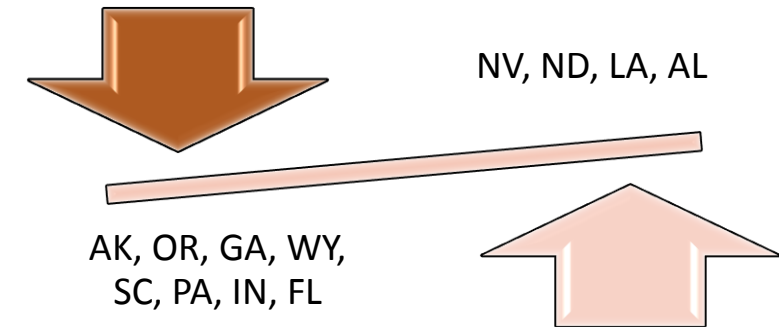
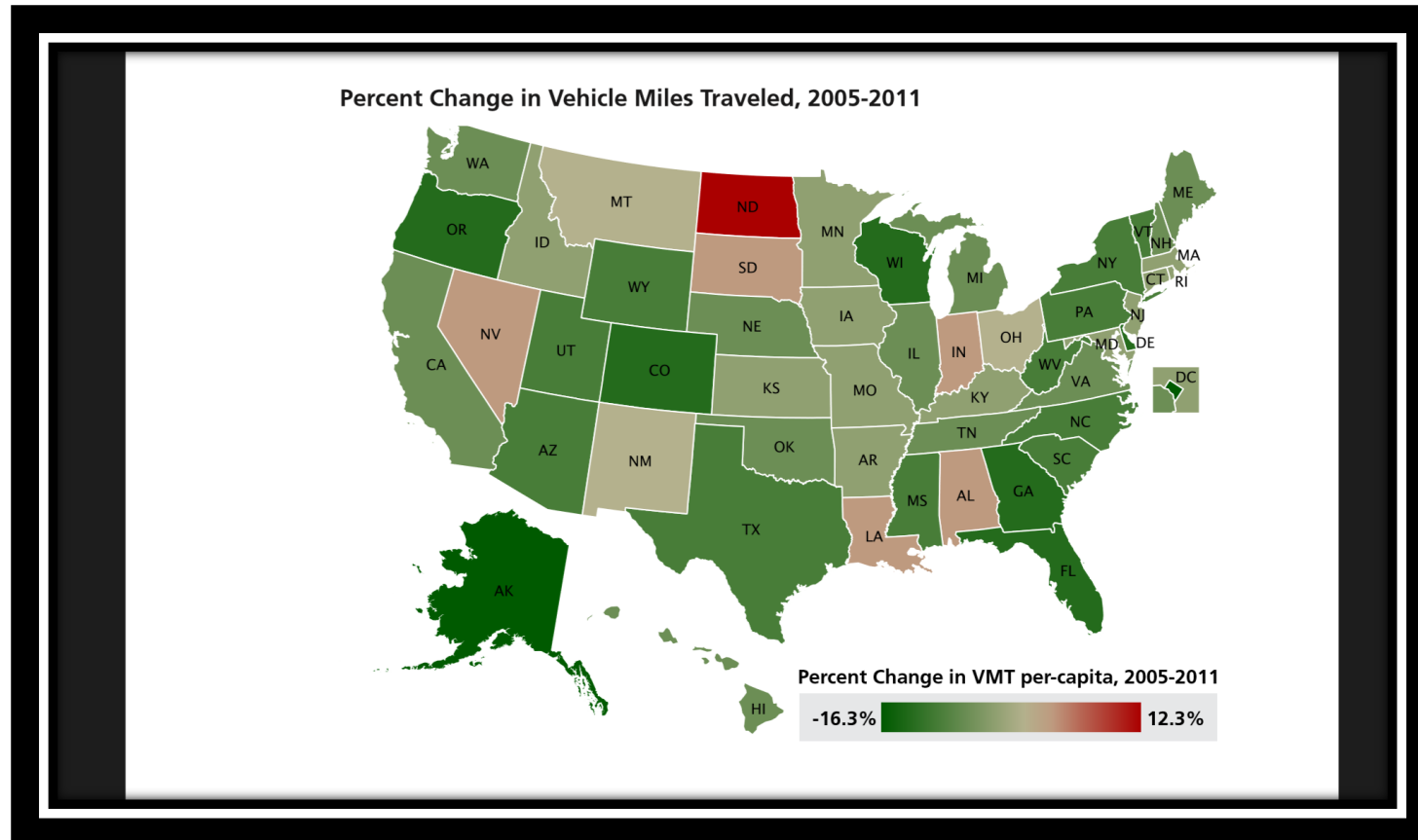
# National Perspective

# Historical Perspective

- After sixty years increases, the VMT Boom stopped around 2004: Decreased driving per-capita.
- 46 states witnessed reduction
- Sharply declined among Millennials- 23%



# Percent Change in VMT 2005- 2011



# Major Reasons for Changes in VMT

Weak economy, job losses

Increased gas prices

changes in technology

Changing demographics

Saturated highways, saturated demand

Rising preference for compact, mixed-use neighborhoods

Telecommuting- up 9 percent from 7 percent in 1999.

# Other Reasons for Changes in VMT

**The recession.** Driving is down even for employed/financially stable

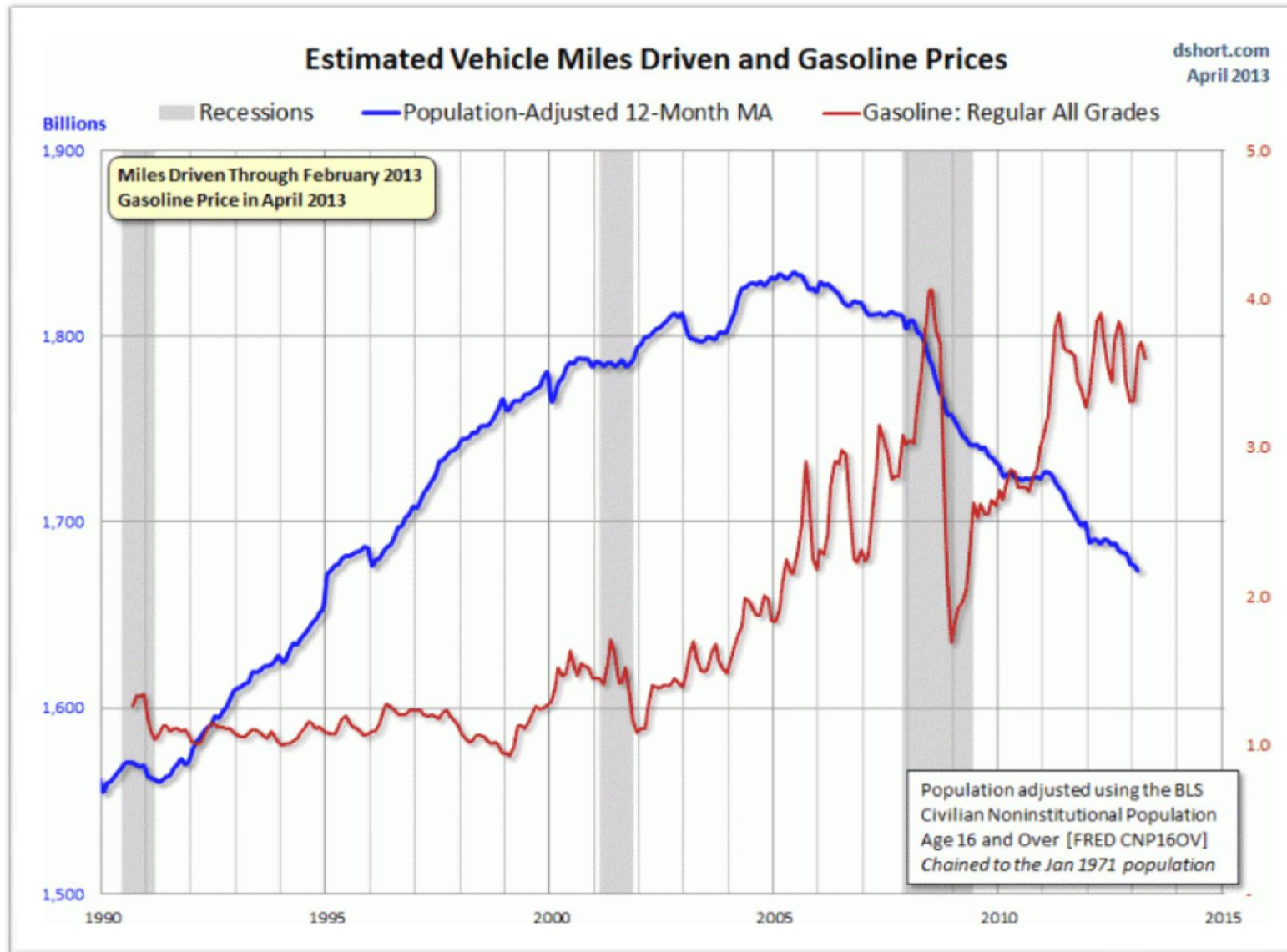
**It's harder to get a license.** State enacted tougher laws for driving licenses.

**TOD** - More younger people living in transit-oriented areas.

**Ecological concerns** play a small role- in an effort to curb their environmental impact.

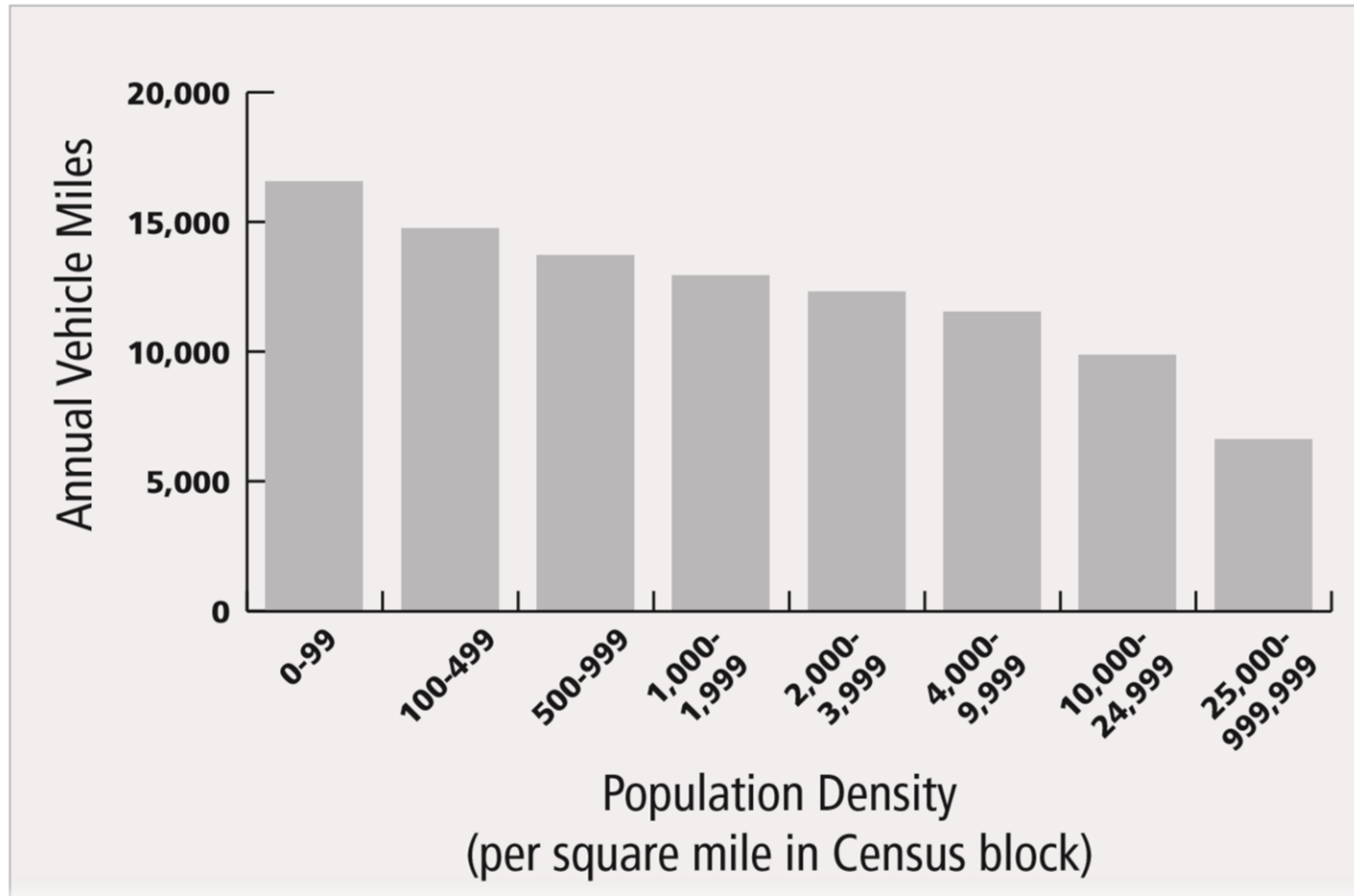
**Rising auto-insurance rates**, continued to climb 10 percent between 2008 and 2010

# Price of Gasoline and Change in VMT



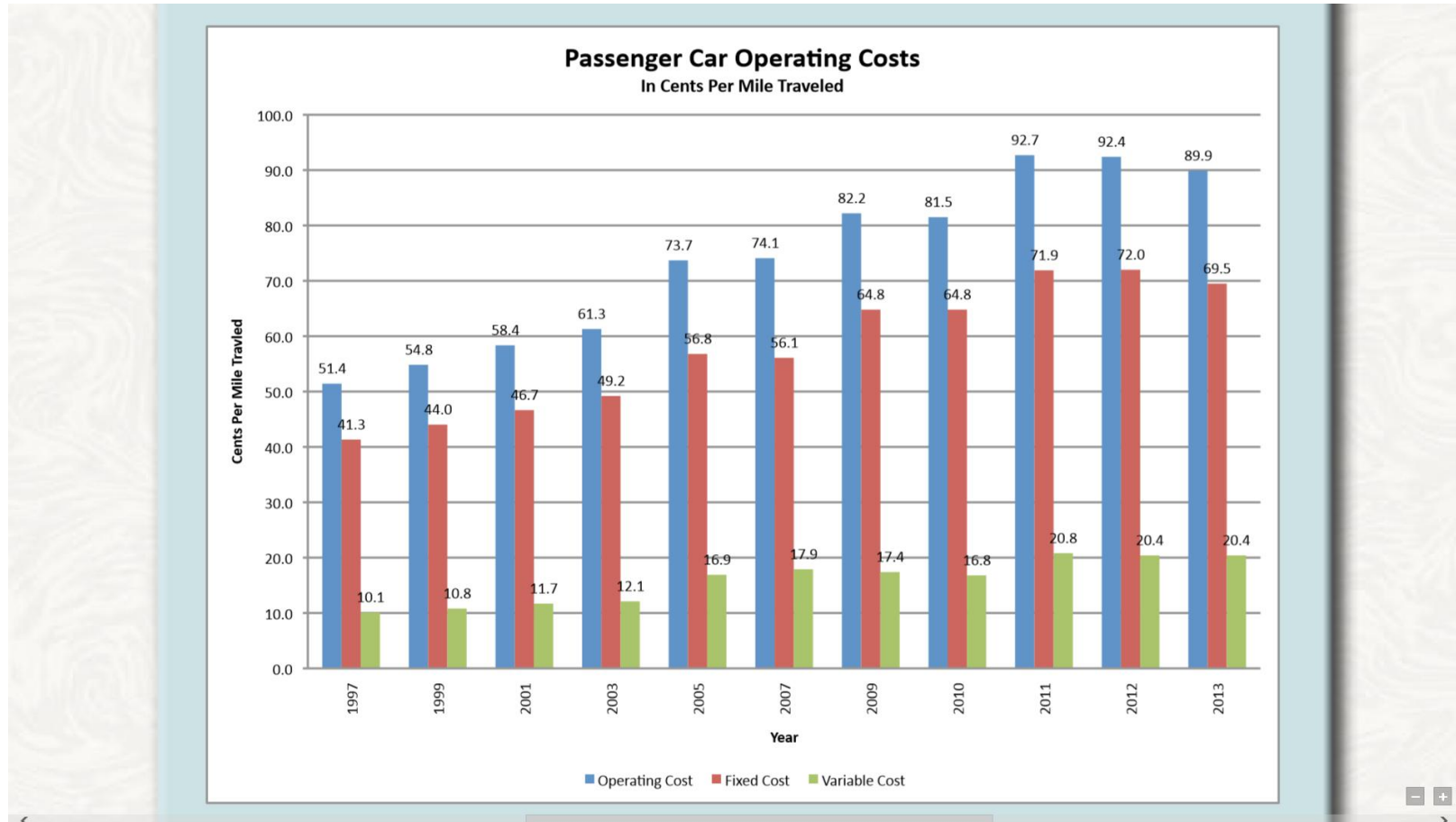
# National VMT and Population

Population Density and Vehicle Miles Traveled

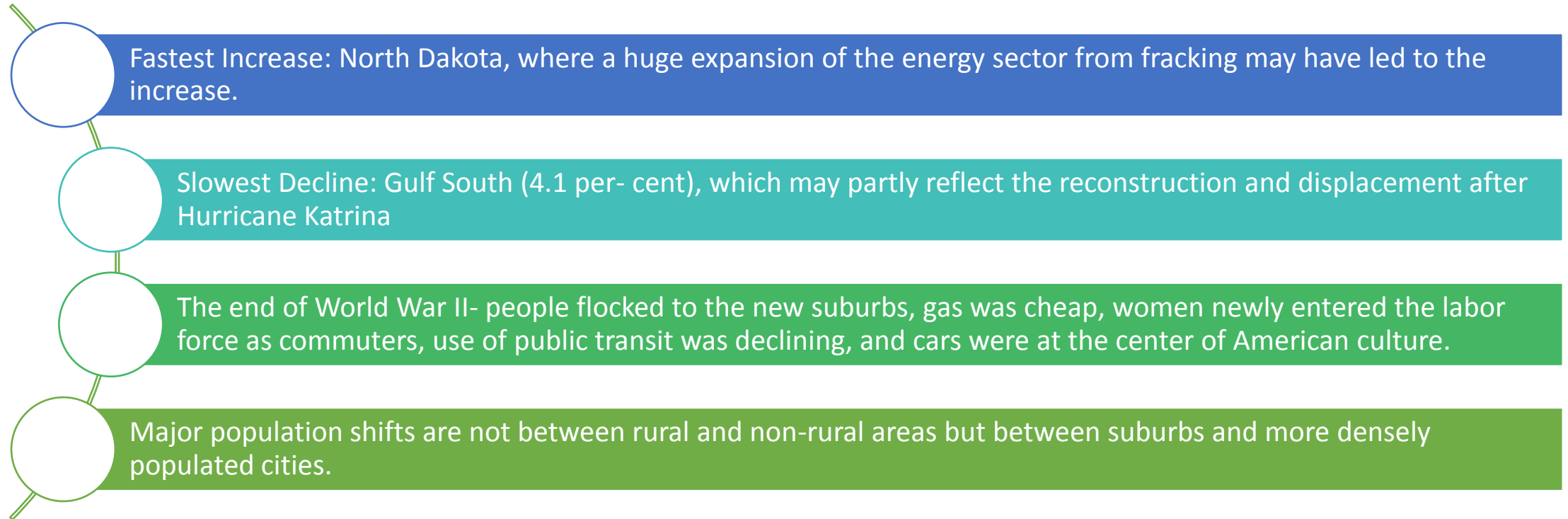




# Impact of Car Ownership

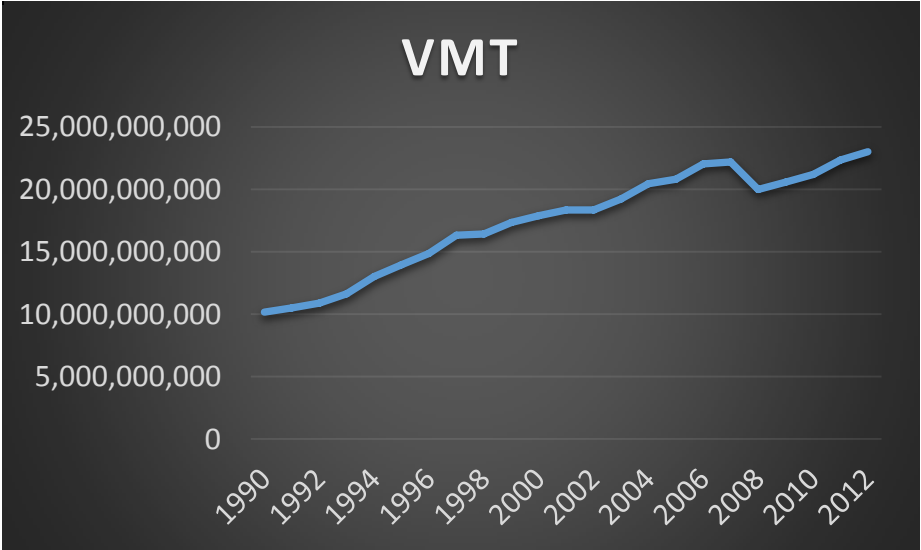
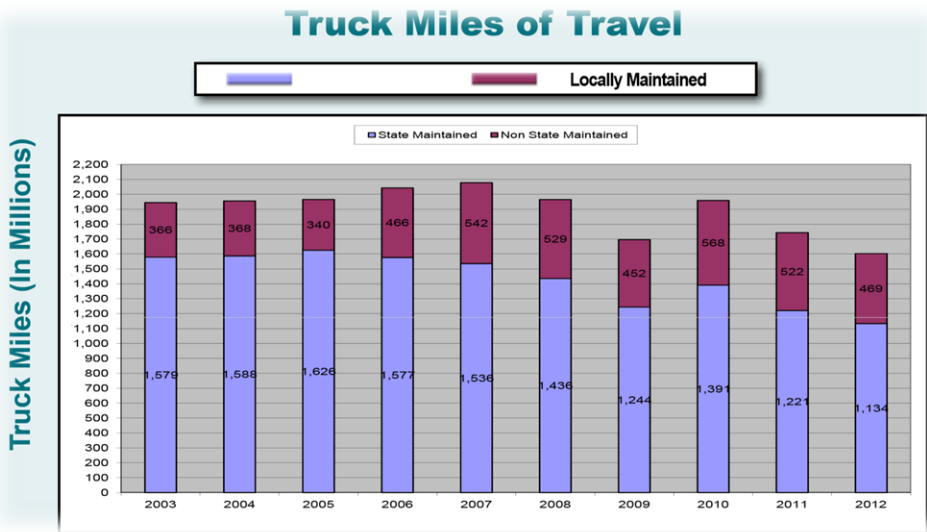
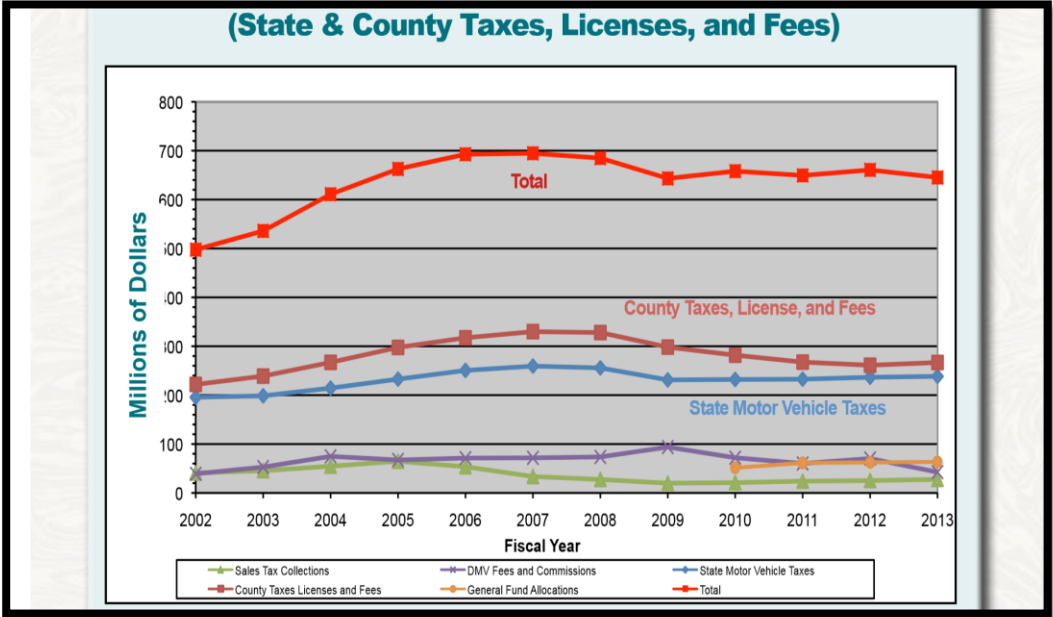


# Prominent Shifts Across the Nation



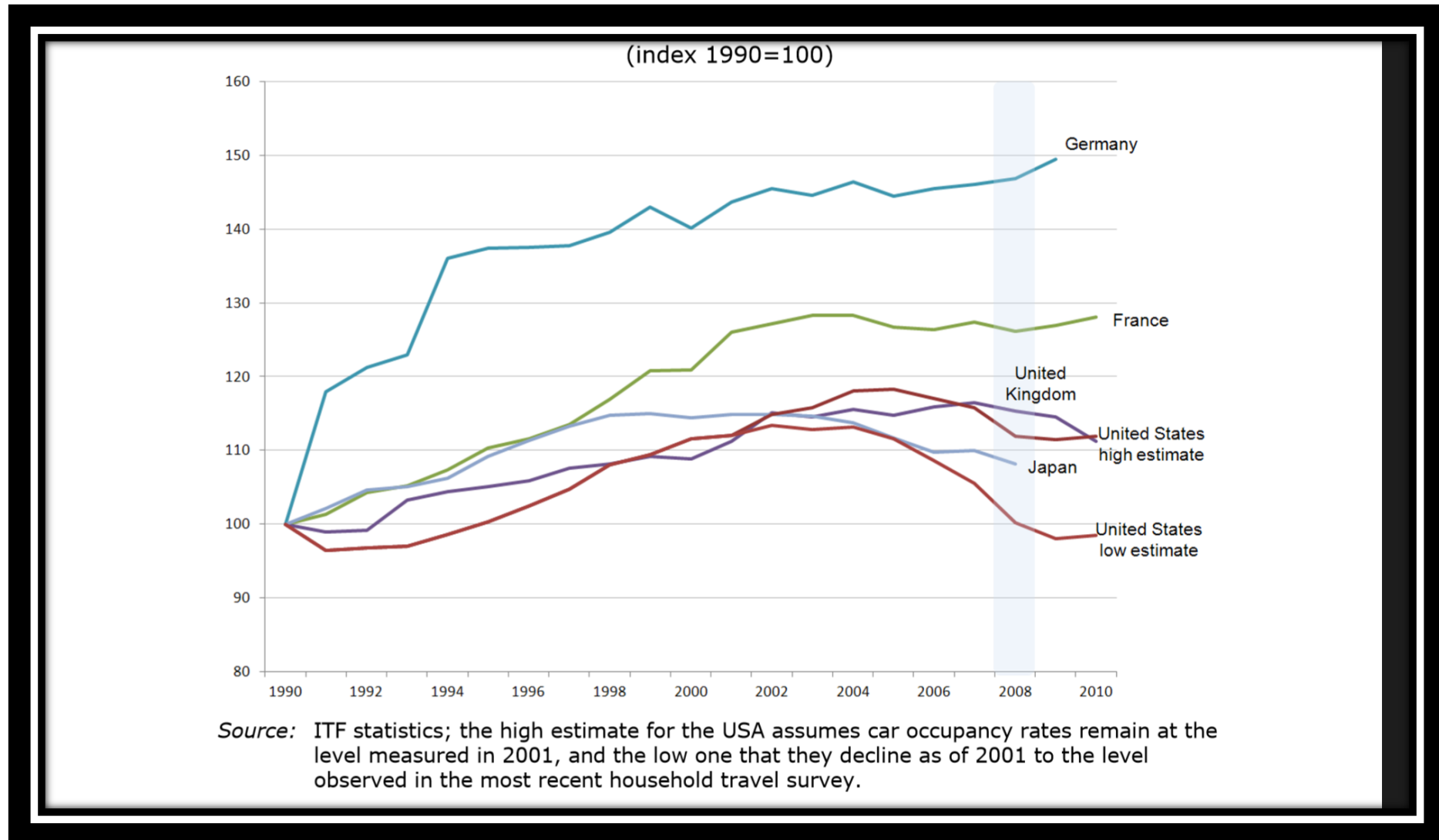
# Nevada Perspective

# Nevada Revenues and VMT



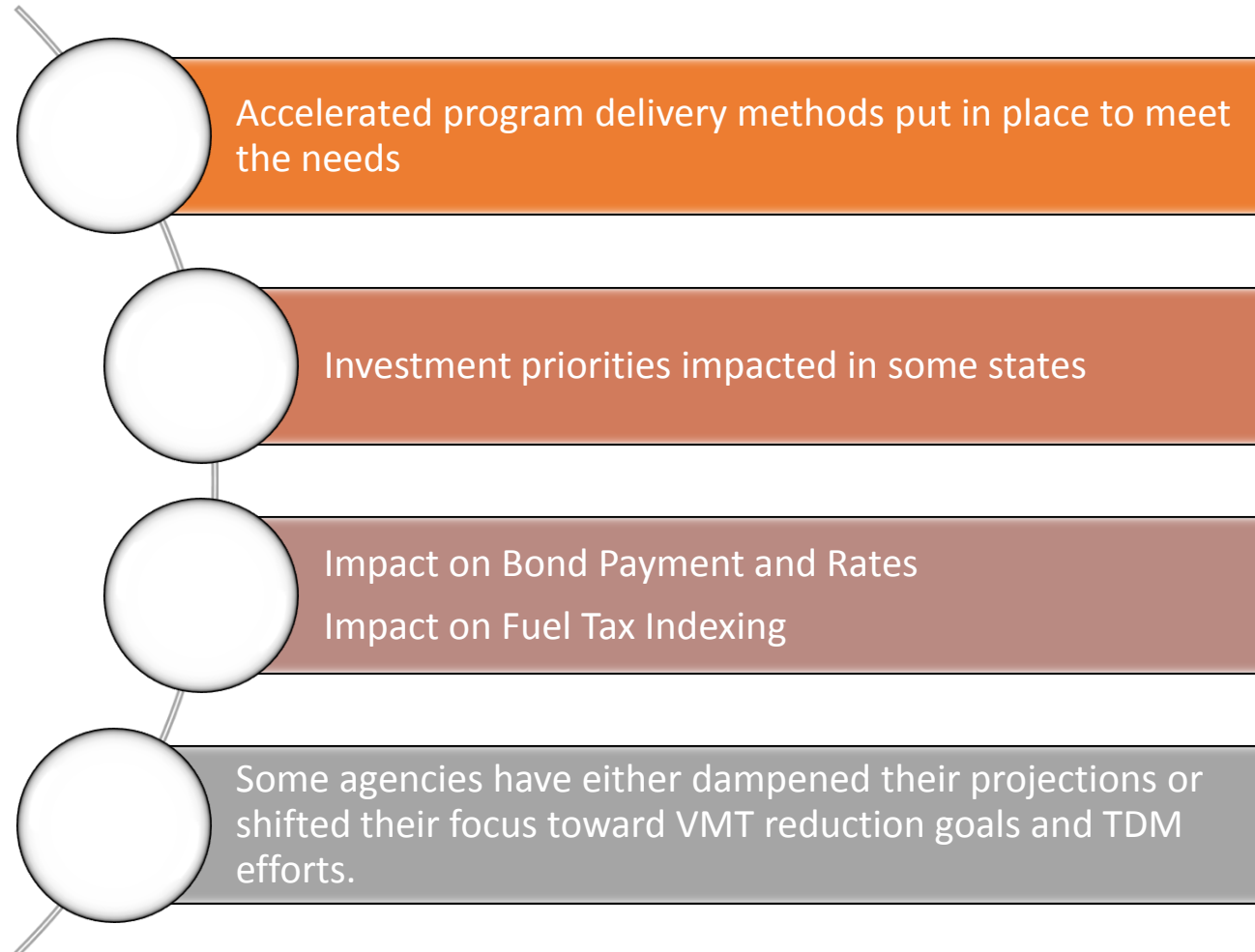
# International Perspective

# Passenger-kilometer by private car/light trucks



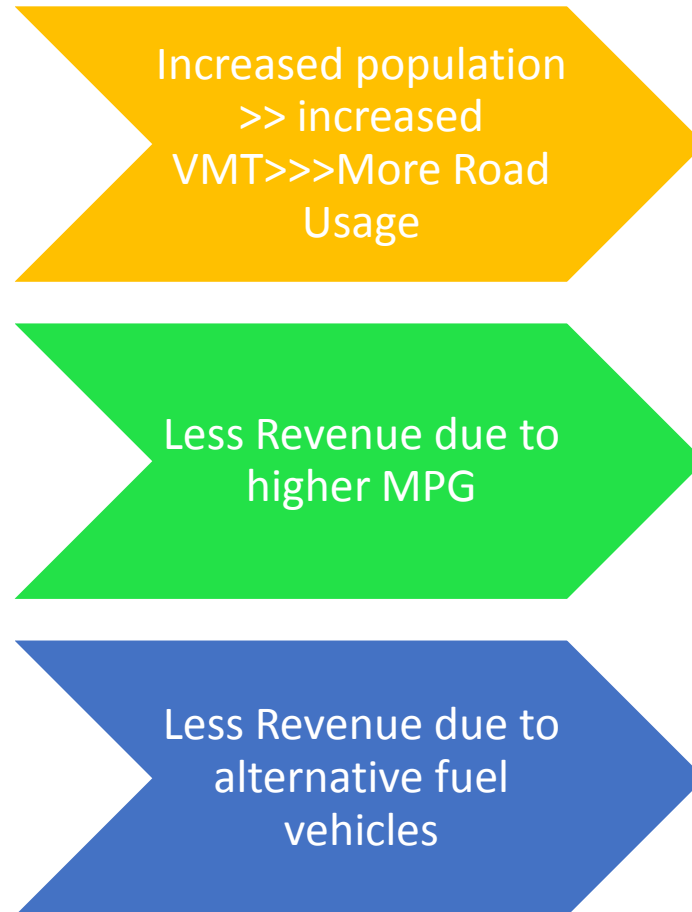
# Impacts of Change in VMT

# Impact on Program Delivery and Business Priorities

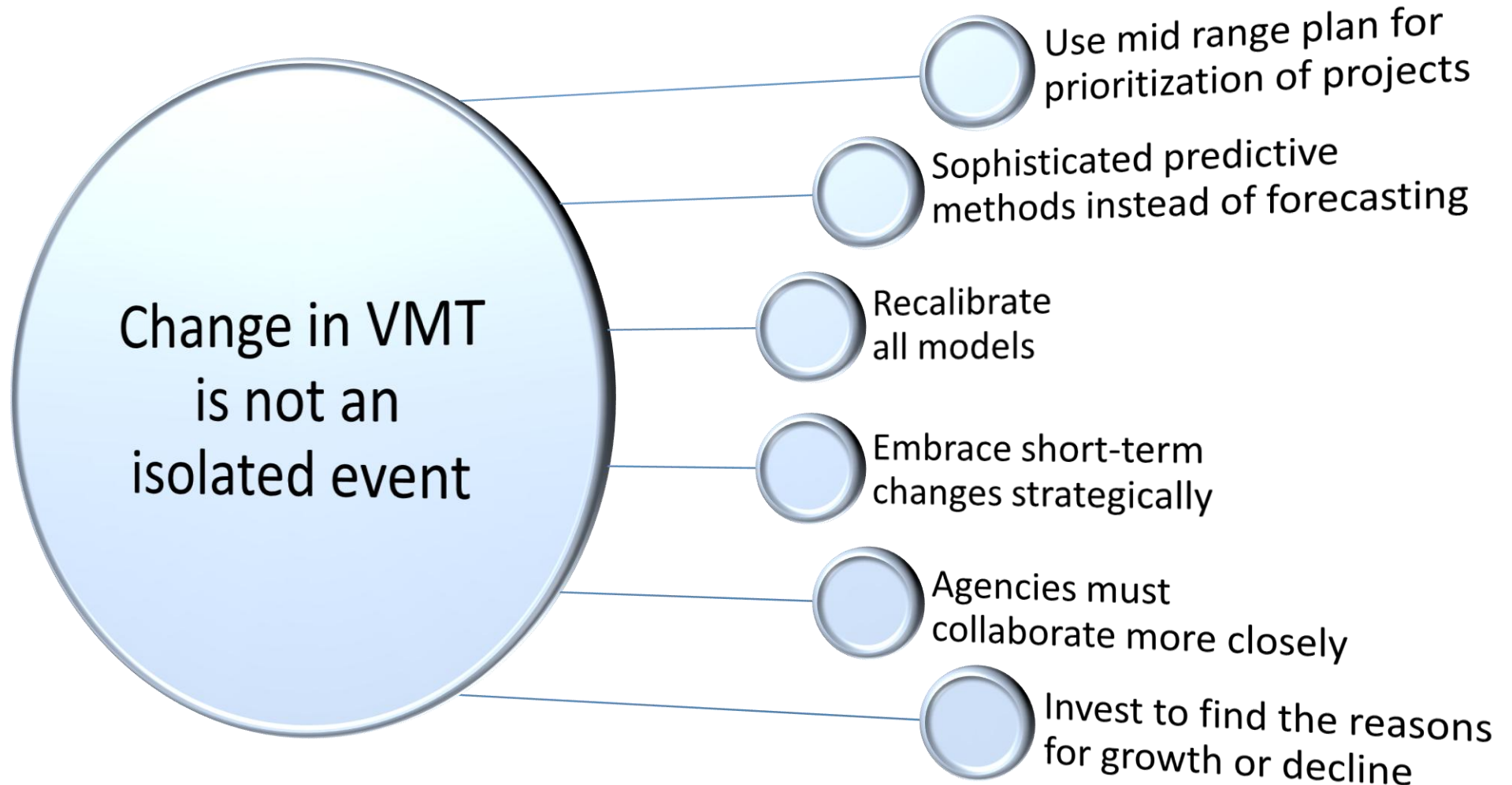




# Future Financial Impacts of VMT Change on System Revenue

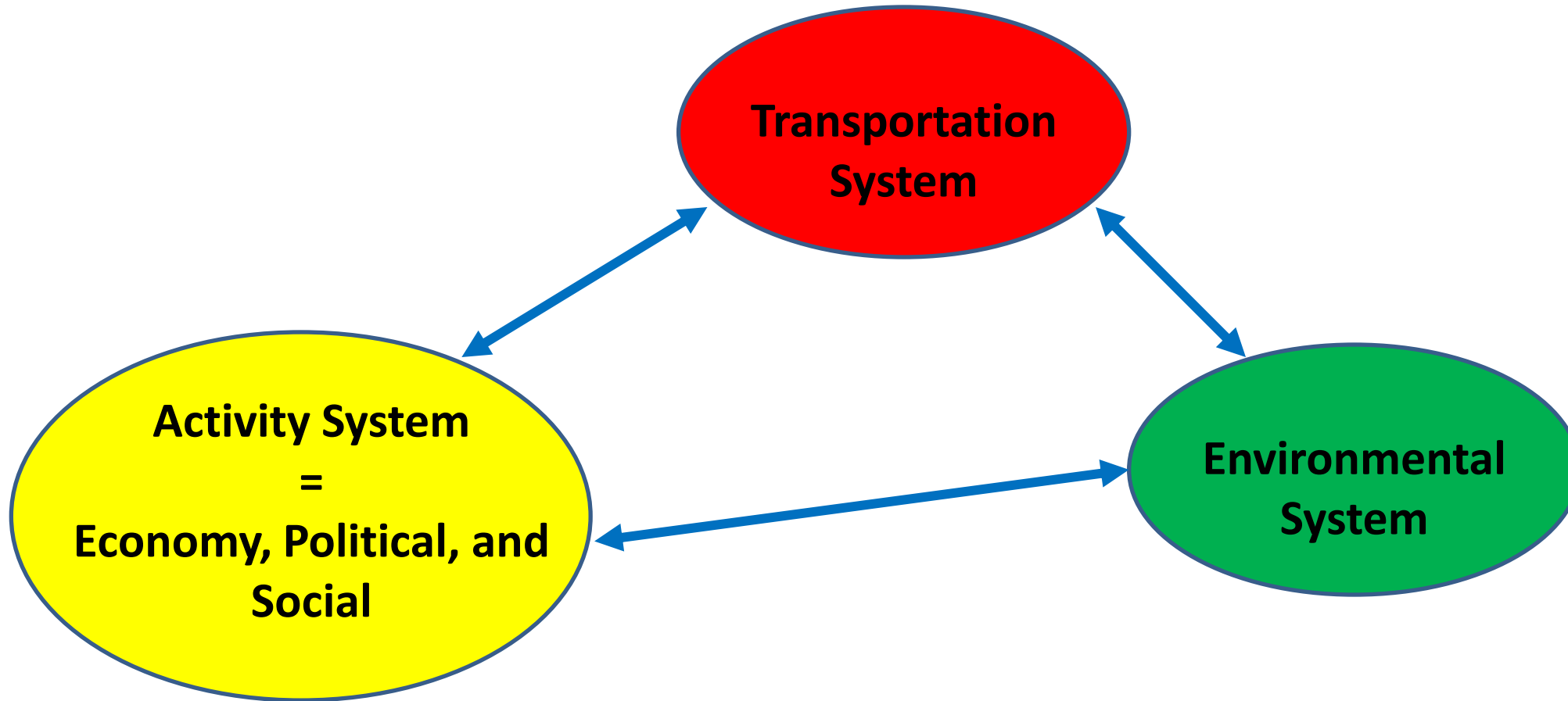


# Next logical Steps

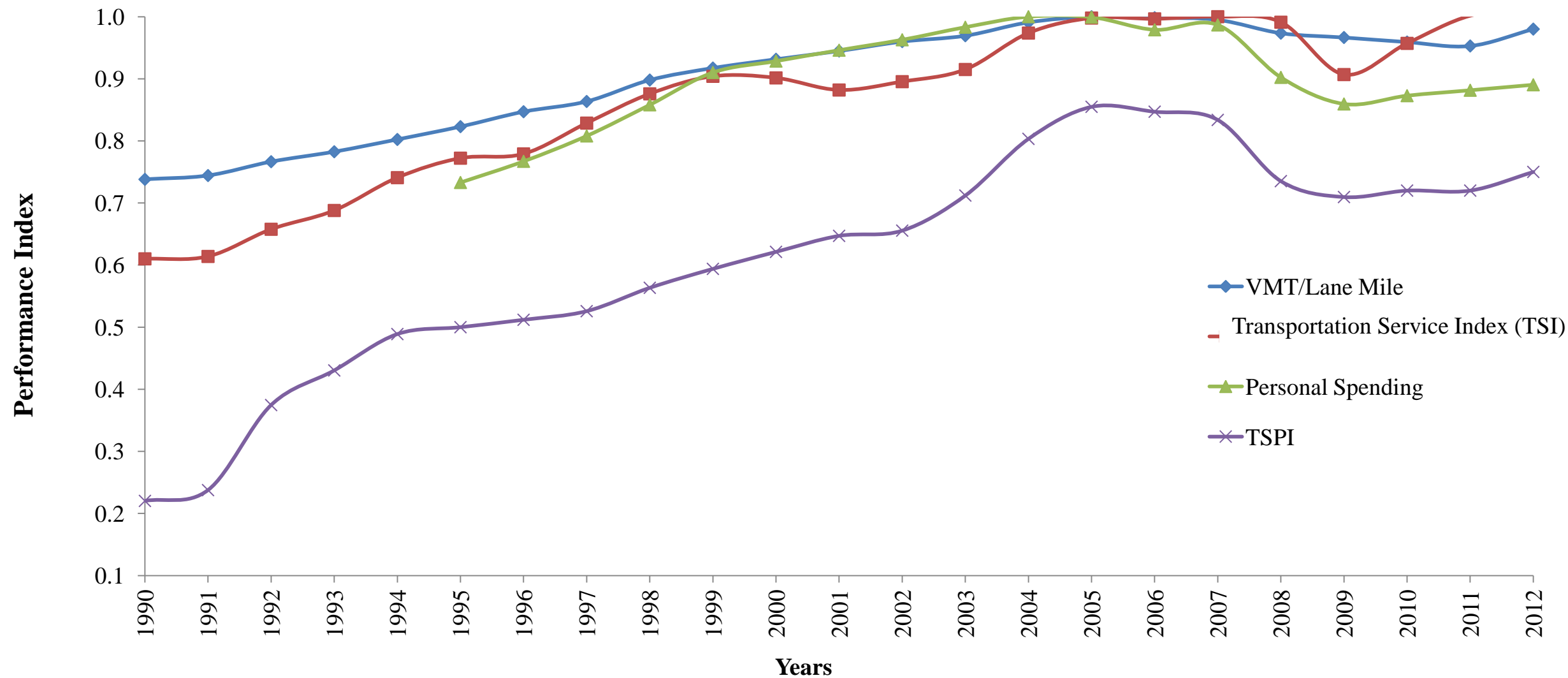


**What are the Trends in Terms of **Performance** for the  
Transportation Sector and Associated Systems?**

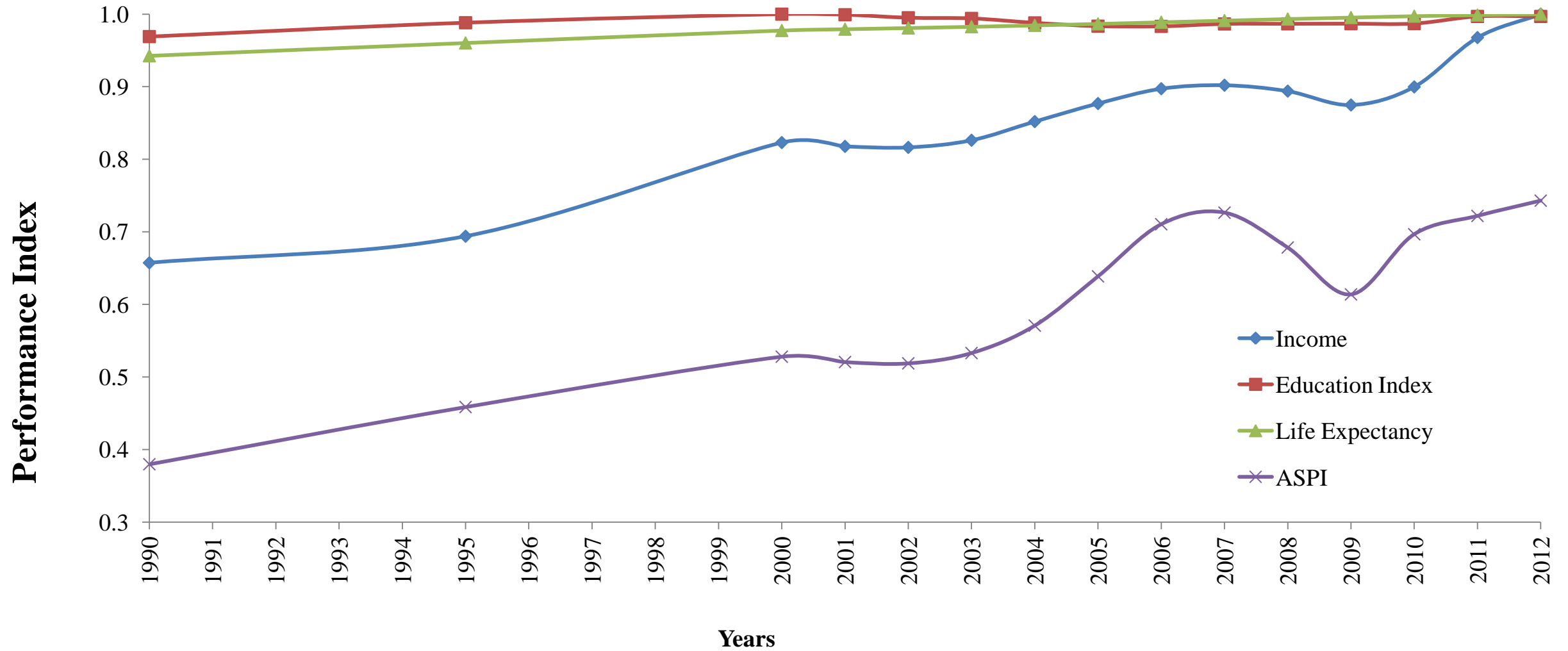
## Comprehensive Approach



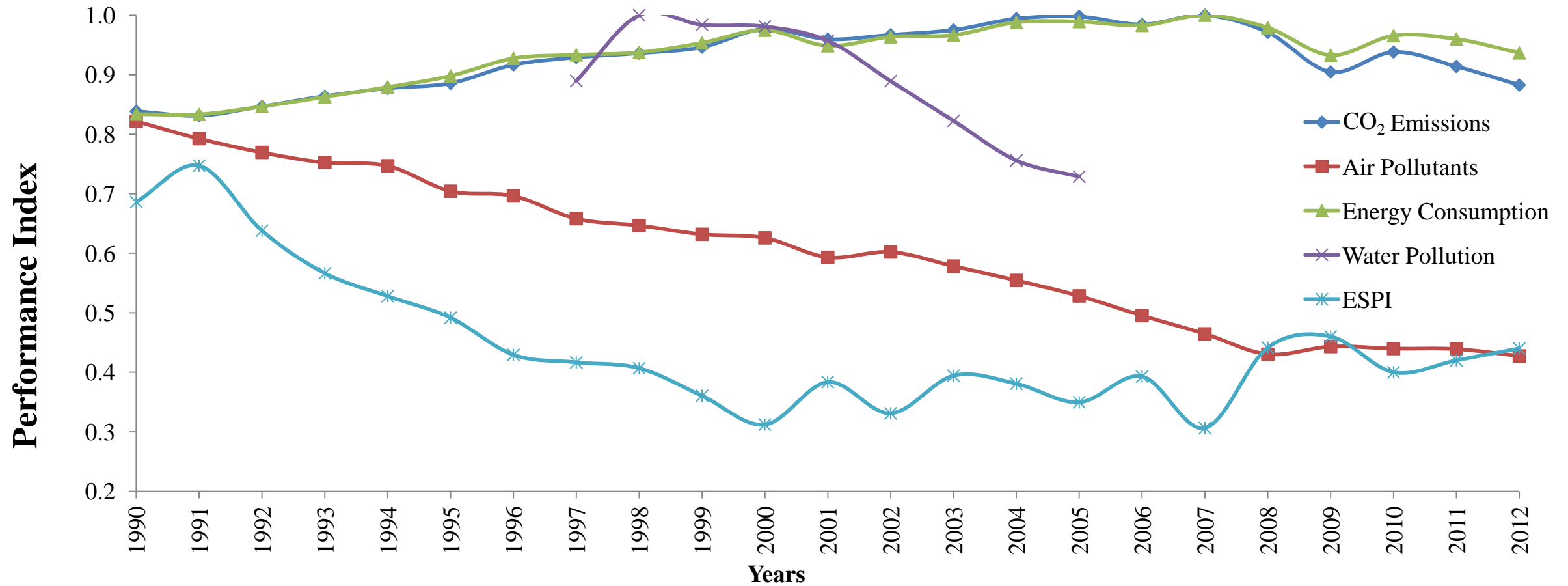
# Transportation System Performance Index (TSPI)



# Activity System Performance Index



# Environmental System Performance Index



# Transportation, Activity and Environmental Indices

