

# SouthEast Connector

Nevada Transportation  
Conference

April 7, 2009



# What is the SouthEast Connector?

- A regional arterial roadway
- Connects the southern Truckee Meadows to the eastern Truckee Meadows
- High access control
- 6 lane facility

# Issues and Concerns

- Crosses Truckee River
- Crosses UNR's Agricultural Farm
- Crosses Rosewood Lakes Golf Course
- In Between residential neighborhoods
- Crosses Proposed Dam (no longer)
- Crosses Proposed Regional Park (?)
- Within Critical Flood Pool 1

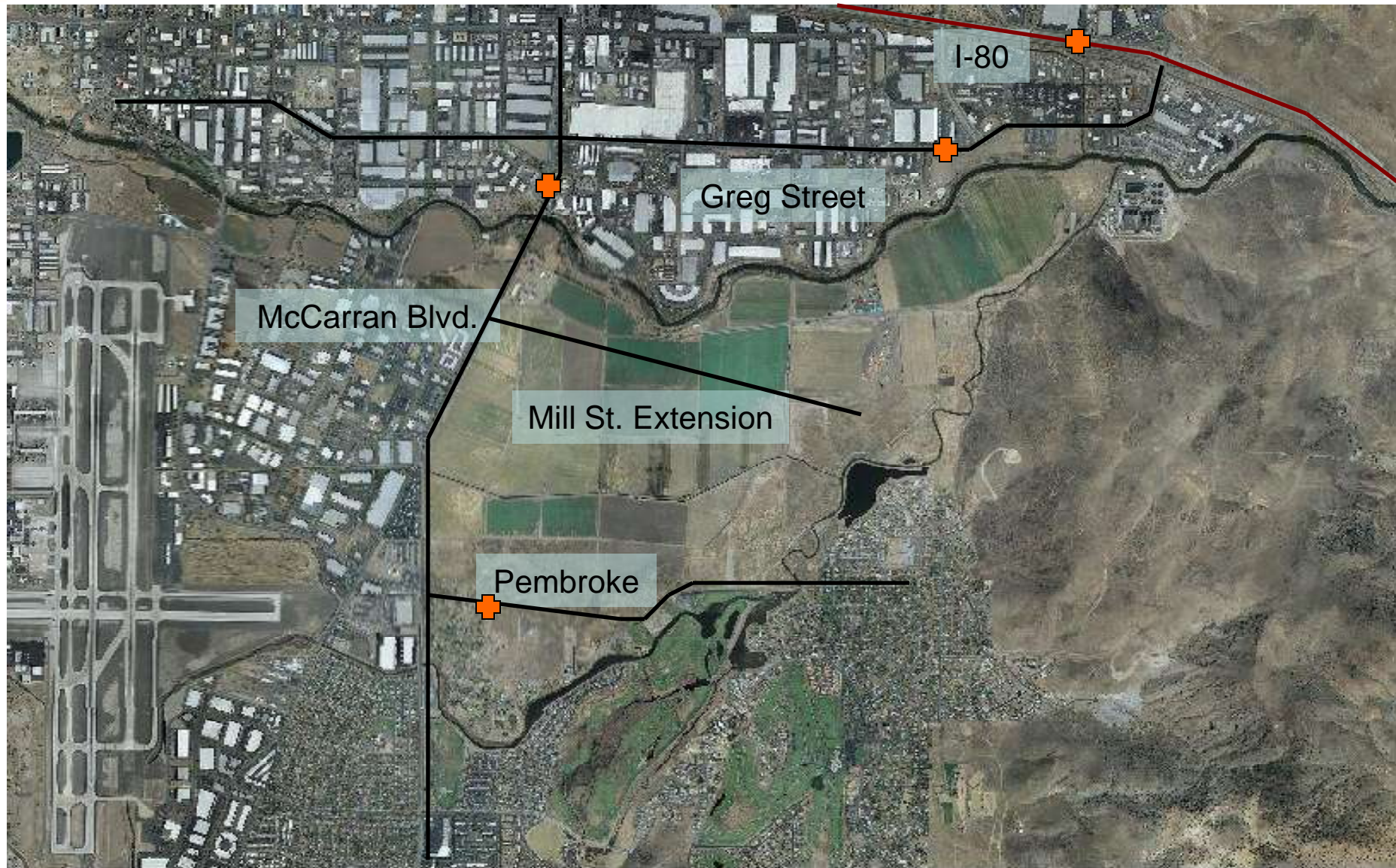


# Traffic Volumes



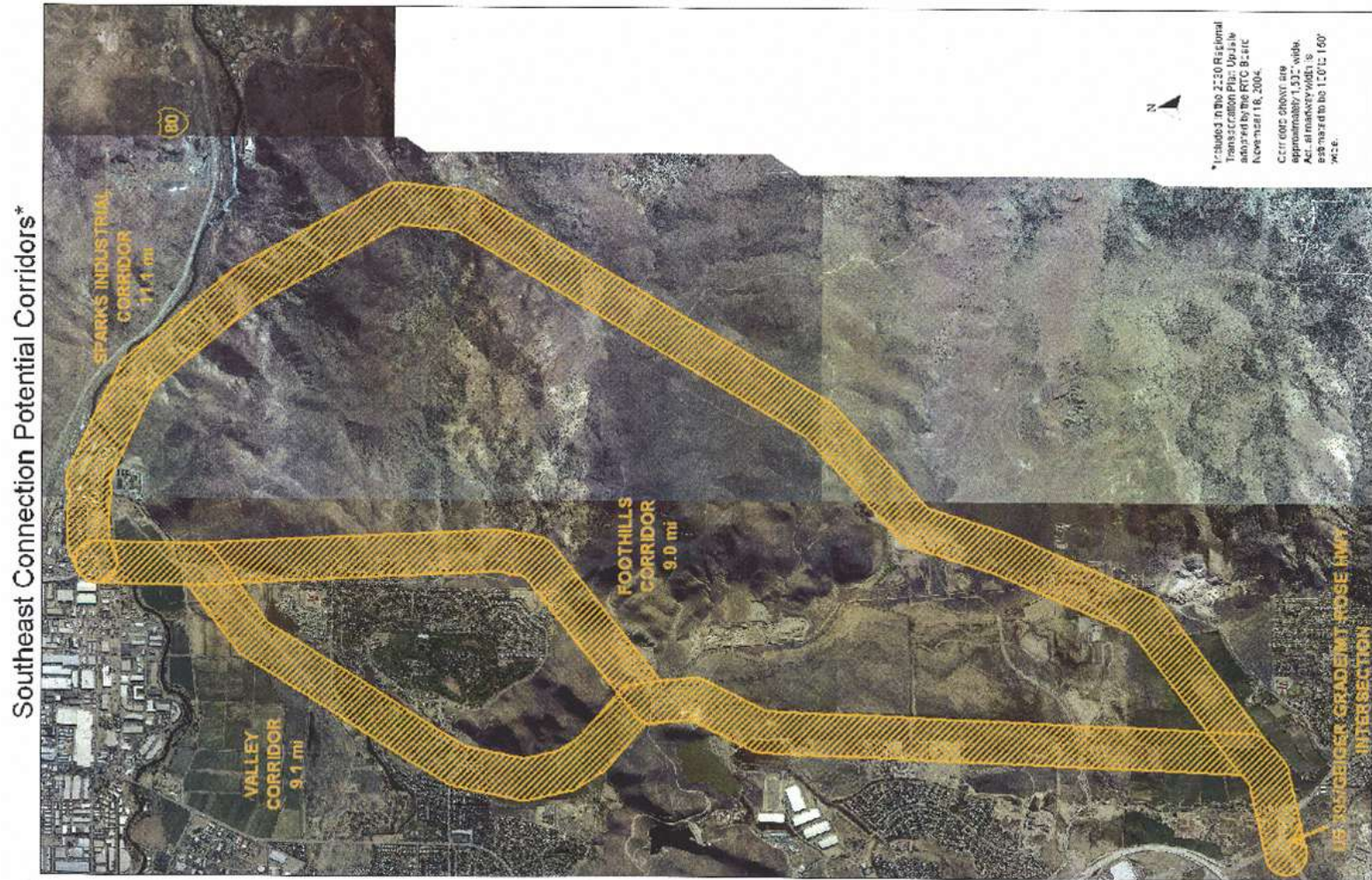


# Traffic Volumes





# Three Possible Corridors



# Valley Corridor



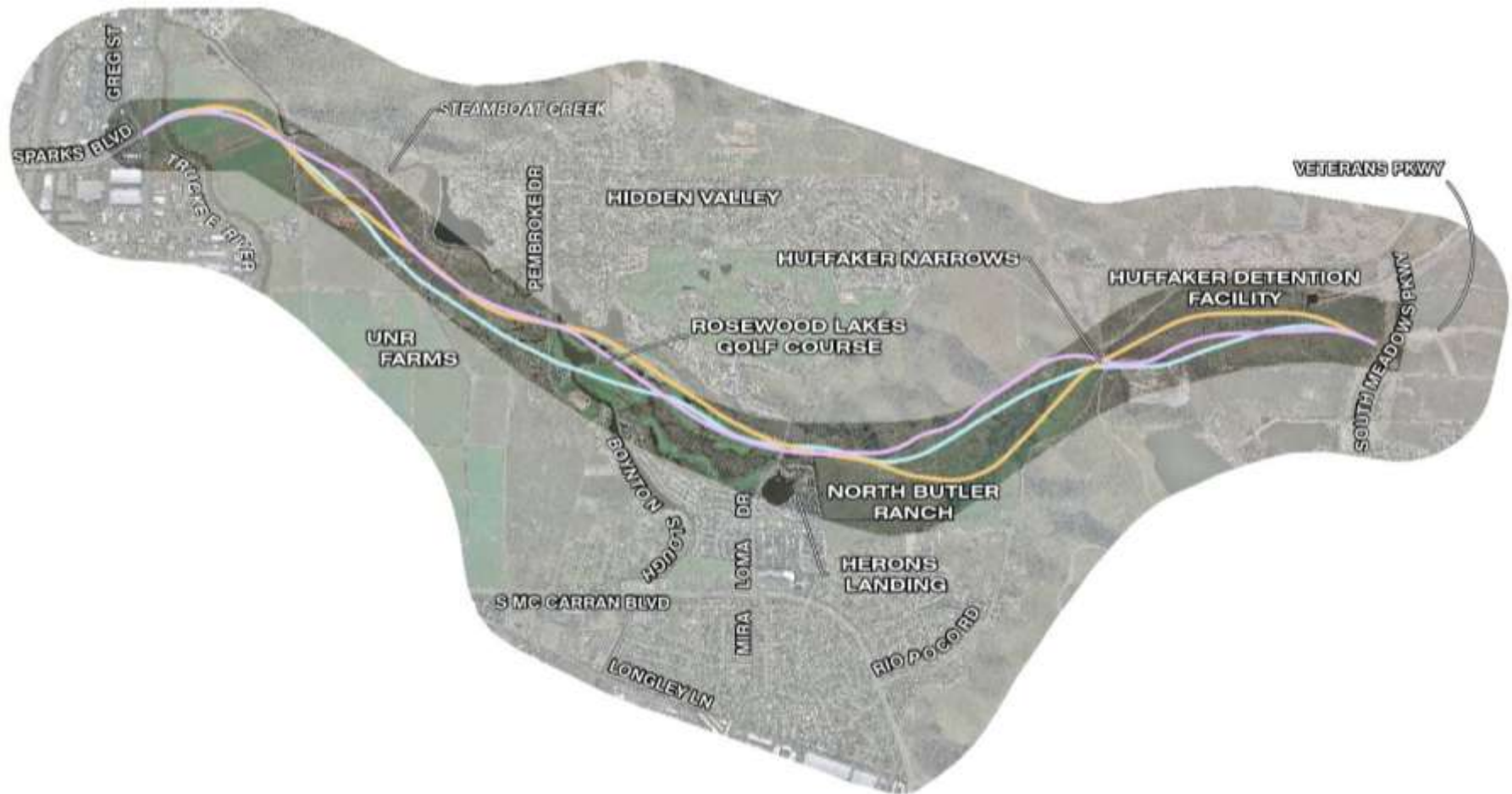
DARKER AREA IS THE CORRIDOR FOR THE PLAN LINE STUDY

## **SOUTHEAST CONNECTOR** VETERAN'S PARKWAY TO SPARKS BOULEVARD



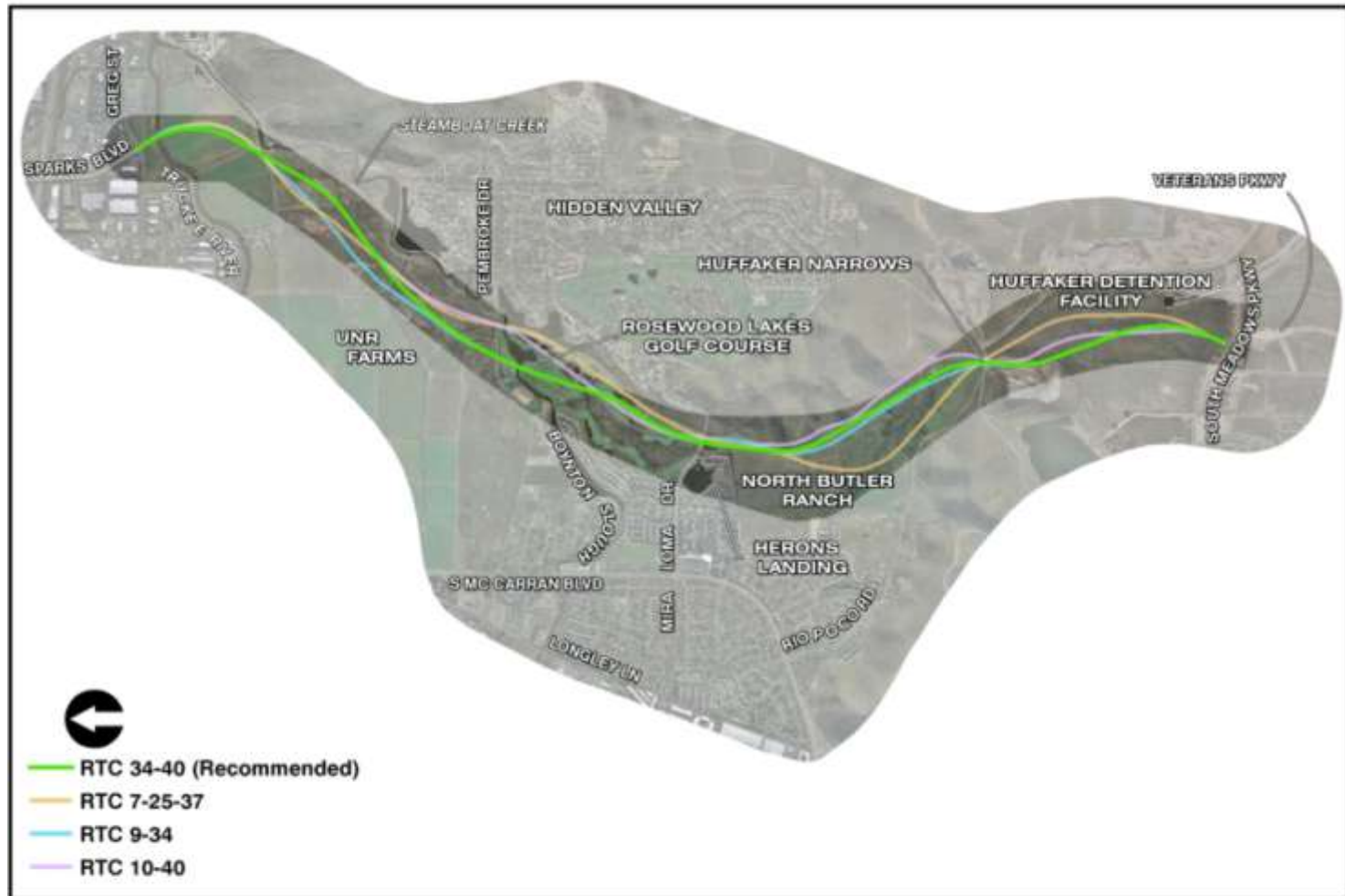


# Three Possible Alignments





# Recommended Alignment



# Recommended Alignment

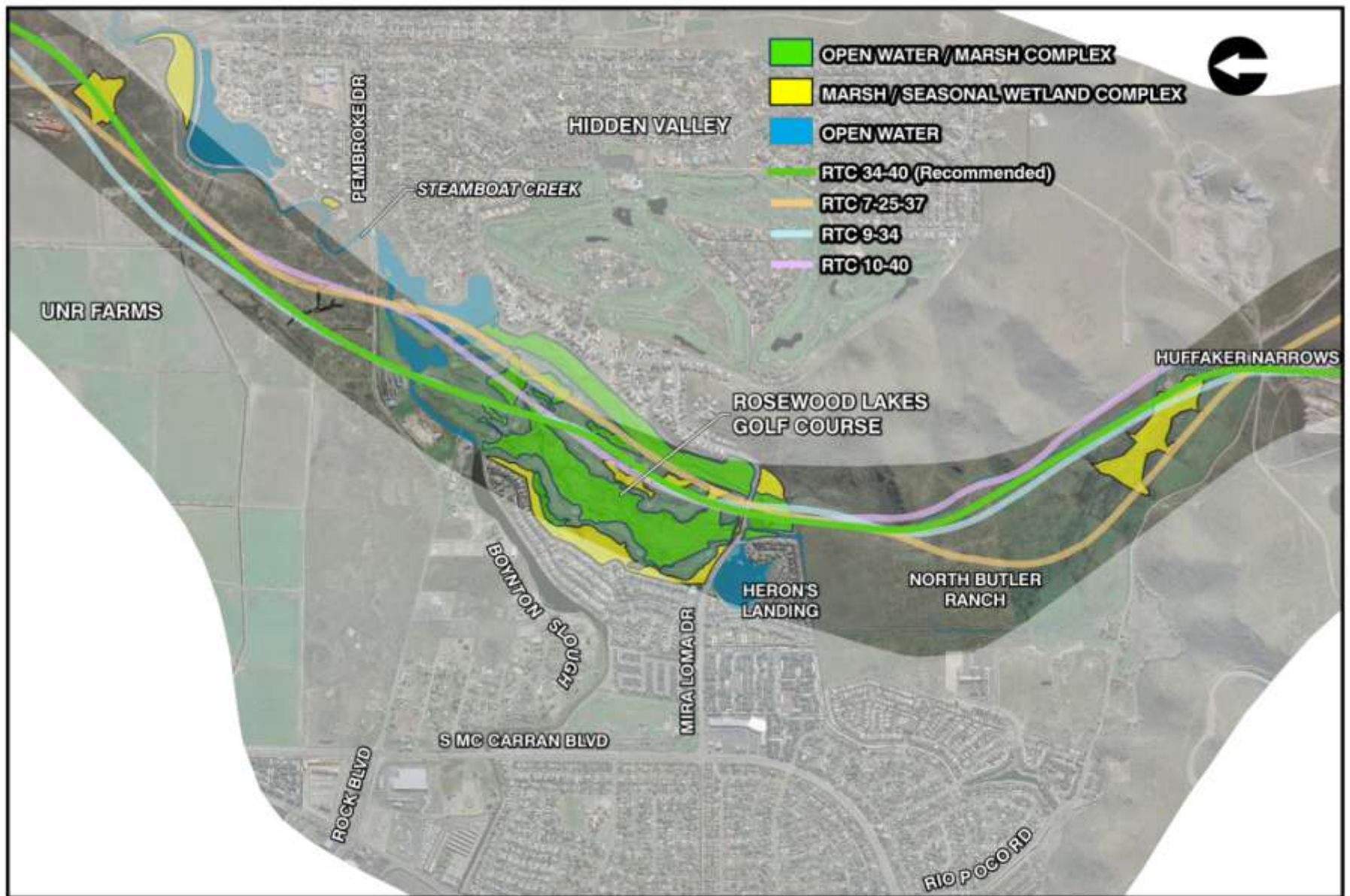
- No Homes or Homesites needed
- Significant Cultural & Archeological sites are left in tact.
- No Adverse Impact to the Truckee River Flood Project
- Golf Course Mitigation is possible
- Reduced Effect to Wetlands



# Recommended Alignment

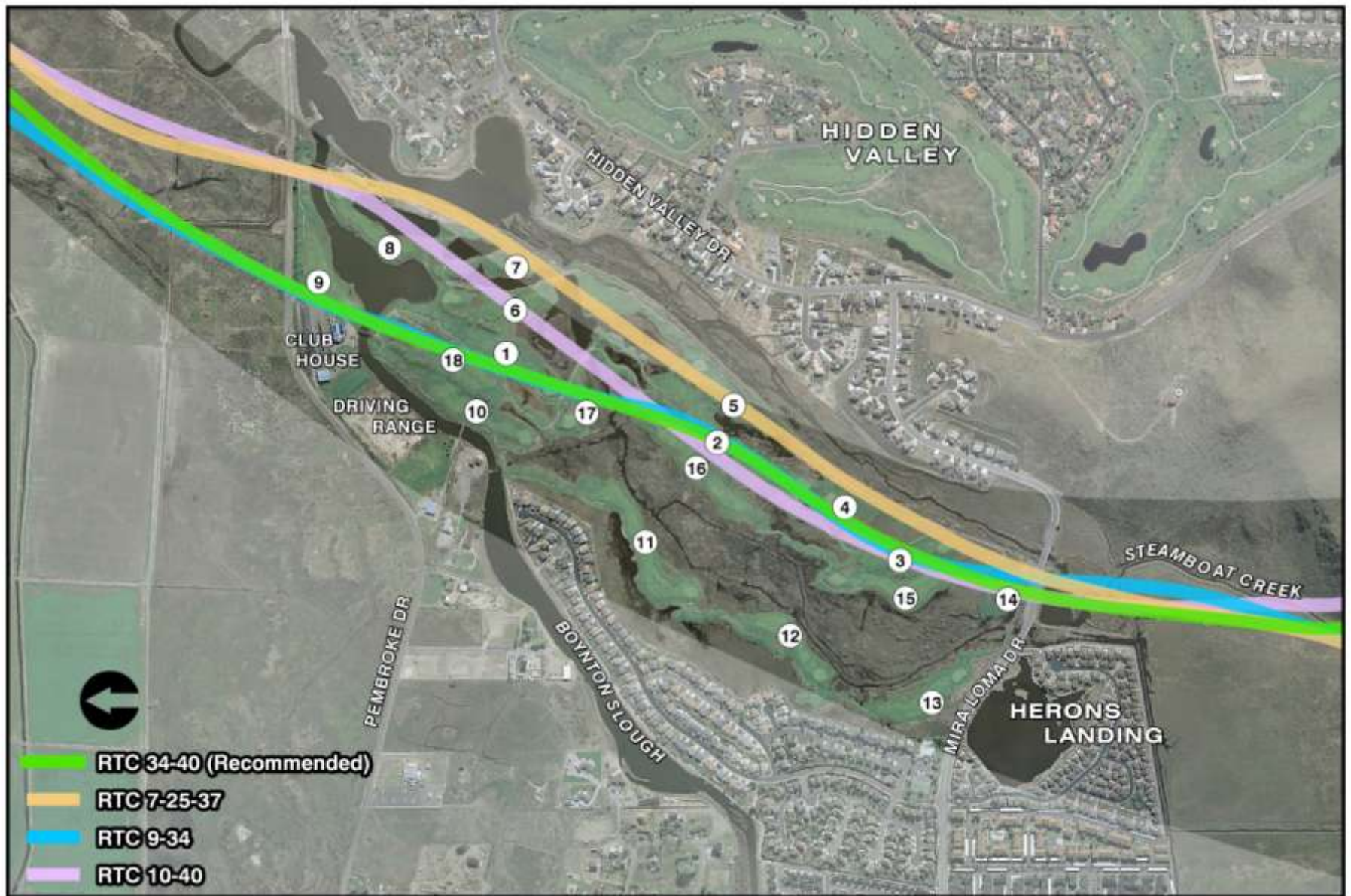
-continued-

- Addresses UNR's concerns
- Allows options for the area south of the Huffaker Narrows
- No Structures are on top of known or inferred Fault Lines
- Fiscally Responsible



# **SOUTHEAST CONNECTOR** WETLANDS





# SOUTHEAST CONNECTOR

ROSEWOOD LAKES GOLF COURSE





## SOUTHEAST CONNECTOR

### RESIDENTIAL BUFFERING



# Photo Simulations









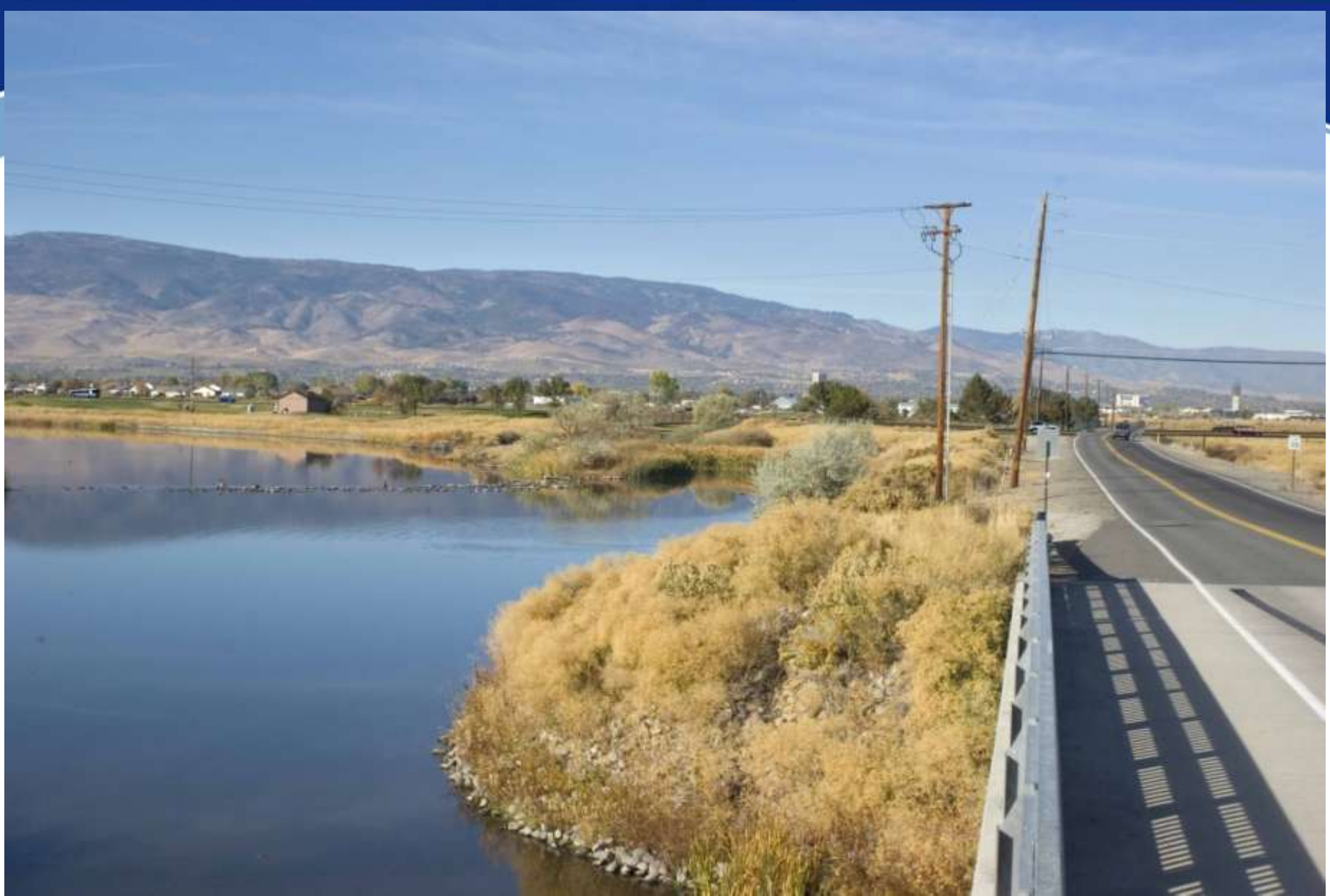












# Virtual Fly-Over



# Mitigation Measures

- Steamboat Living Creek









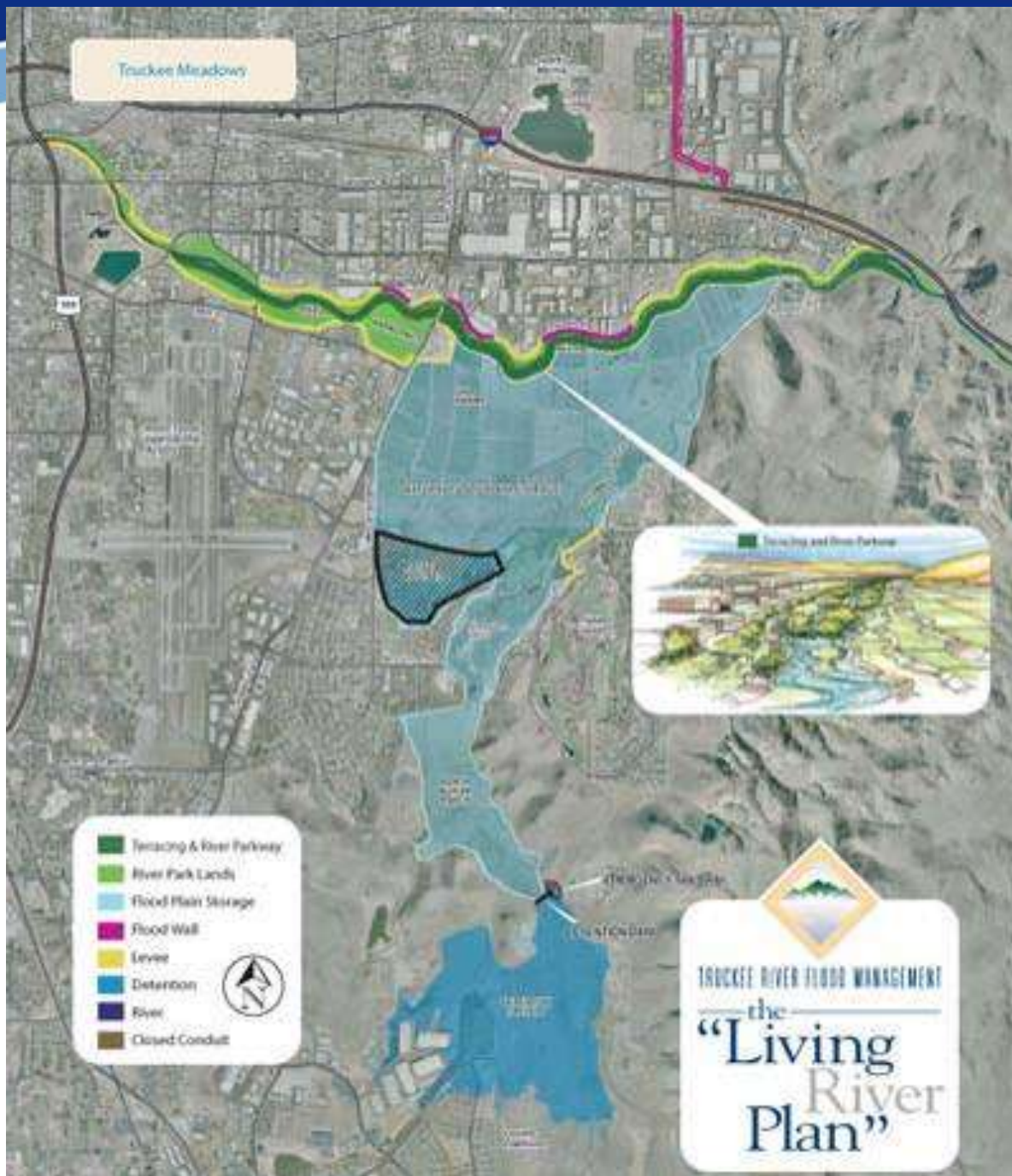












# Truckee Living River





# Mitigation Measures

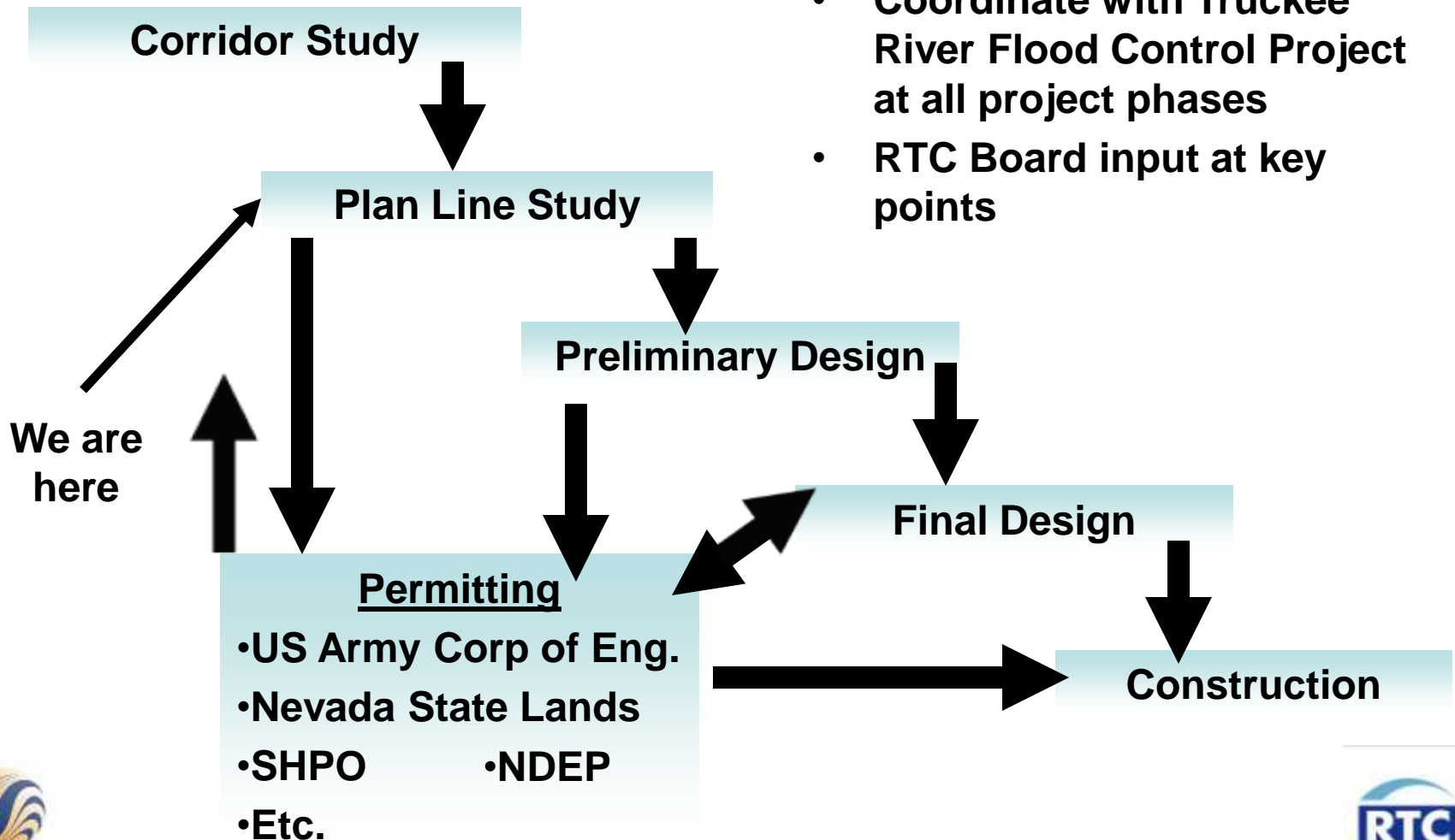
- Steamboat Living Creek
- Wetlands
  - United States Army Corp of Engineers
  - Sub Consultant has recommended 2:1



# Mitigation Measures

- Steamboat Living Creek
- Wetlands
  - United States Army Corp of Engineers
  - Sub Consultant has recommended 2:1
- Rosewood Lakes Golf Course

# SouthEast Connector - Tasks



# What Next?



# Thank You.

Garth Oksol, P.E.

332-2137

[goksol@rtcwashoe.com](mailto:goksol@rtcwashoe.com)

[www.rtcwashoe.com](http://www.rtcwashoe.com)

Click on Hot Topics

